

BAUMGARTEN CATTLE CO.

22nd ANNUAL PRODUCTION SALE

Friday, February 7, 2025 • 1:00 p.m. MST

at the ranch south of Belfield, ND



WELCOME

It is with great pleasure that we welcome you to our 2025 bull sale. This year marks 110 years of Baumgartens raising registered Herefords, this is our 22nd annual production sale. Cattle prices continue to be on the rise, which is great to see such a bright future. Now more than ever is the time to invest in high quality cattle and predictable genetics to build back cow herds.

It is exciting to watch our family grow and see changes in 2024. Jake and Savanna welcomed a baby girl, Lainey Rae in August and they moved into their new home. We are a family run operation with income based on farming and ranching. We are truly blessed with Isaiah, Benjamin, Theodore, Colt and Lainey in our lives. They love being involved with the farming and ranching and are learning so much from their experiences.

Structural soundness, performance and balance are our top priorities. We want these bulls to sire vigorous calves at birth and wean big, heavy calves. We want them to leave you with cows that are functional, broody and milky while maintaining correct body condition without being pampered. This year's offering will be as deep in quality as ever. Bulls were cut due to high birth weights and inadequate performance. We feel every animal in the sale has more than adequate structural soundness. If they're borderline in this quality they are cut. We are proud and humbled with our genetic improvement.

Thank you for considering our cattle and we invite you to come tour our cow herd and bulls any time of year. Please contact us with any questions. Our main focus is for you to feel comfortable and confident with your purchase. Remember the fastest and cheapest way to add pounds is crossbreeding and the baldy cow is the most profitable cow!

The Baumgarten Family



Jake, Savanna, Theodore, Colt and Lainey



Wendy, Rollie, Isaiah and Benjamin



PERKS BEHIND THE Z DIAMOND BULL

Performance oriented, maternal driven consistence

Structure

We are very strict in our selection for sound feet and legs. This in return will increase longevity in foot structure which will result in more breeding season for a bull.

First Breeding Season Guarantee

All bulls are guaranteed sound breeders and have a first season guarantee. Breeding season is defined as the 60-day period following the first turnout. Seller must be contacted as soon as buyer is aware of a problem and before bull is disposed of. All claims must be submitted to seller within 8 months of sale date. In case of adjustment, it will be made with a replacement animal of equal value or credit for next year's sale.

Free Delivery

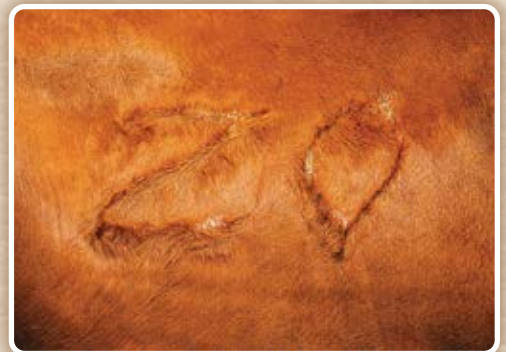
We offer free delivery on registered stock within the first 500 miles. After that we will work with buyer for further arrangements. If we can meet at central points it's always appreciated but we will do our best to bring them right to your front door!

Bulls Fed Free Until April 1

We will feed all bull calves free until April 1. They will be kept on a high roughage ration to get them in shape for breeding season. Sometimes life happens and we don't get bulls delivered right on that day. That is on us, and we will keep feeding them free for a week or two longer or till we get them to you.

Sight Unseen Guarantee

We offer this guarantee if you talk to us before the sale. We would love to assist you in the purchase of your bull either way and always suggest you come look in person. Yet in the case you can't make it to the ranch we will help find the bull you're looking for and guarantee you will like him! Talk to Rollie or Jake for more information.



BAUMGARTEN PRODUCTION SALE

Friday, February 7, 2025 • 1:00 p.m. MST
at the ranch south of Belfield, ND

Selling: 68 Yearling Hereford Bulls • 7 Two-Year-Old Hereford Bulls
7 18-Month-Old Hereford Bulls • 8 Registered Hereford Bred Heifers
13 Commercial Hereford Heifer Calves • 17 Commercial Angus Heifer Calves
JOIN US FOR A FREE LUNCH! Will feed bull calves for free until April 1st.
View photos and videos of bulls on our website at www.BaumgartenCattle.com

Auctioneer: Roger Jacobs

Sale Day Phones:

Rollie Baumgarten..... 701-290-3469
Jake Baumgarten..... 701-290-3450
Todd Kuelbs..... 320-232-0404

Special Guest:

North Dakota Hereford Assoc. President: Dan Donnelly
North Dakota Hereford Queen: Olivia Waddington
North Dakota Hereford Princess: Micah Stuber

Sale Representatives:

American Hereford Association
Kevin Murnin.....406-853-4638
Western Ag Reporter
Kris Peterson..... 701-339-0305
Farm & Ranch Guide
Kirby Goettsch..... 605-380-3939
Hereford America
Jill Hotchkiss.....605-490-1409
Marc Hotchkiss..... 605-210-1956

Our first preference is to have everyone at the sale who is interested in our cattle. We realize this is not always possible due to our busy lives and commitments. We encourage our customers to come and visit any time prior to the sale. We are happy to show you our offering this year as well as our cow herd and answer any questions. We will gladly make time for you. We are never too busy. You also have the option of looking at the cattle alone if that is your preference. All the cattle can be viewed on our website and there are videos of the bulls as well. You have the opportunity to bid on DV Auction if you can't attend the sale. Our sale representatives are also available to take phone bids on sale day.

If you have questions about specific lots please reach out to Rollie, Jake or Todd and they will be happy to answer your questions about this great offering of bulls we have this year.

Genetic Defects

All animals that are possible carriers of any known defect will be tested and carriers will be noted in foot notes.

DVAuction
Broadcasting Real-Time Auctions

Visit www.DVAuction.com
and Register Today!

For General Questions Please Contact Our Office:
(402) 316-5460 or support@dvauction.com

NATIONAL CATTLE EVALUATION TERMS

EPD — EXPECTED PROGENY DIFFERENCE:

Estimate of a bull or cow's future progeny performance compared to progeny of a breed average sire or dam. EPDs are expressed in actual pounds, plus or minus, for birth, weaning and yearling weights and maternal performance.

2023 HERFORD BREED EPD AVERAGES

CED	BW	WW	YW	MILK	M&G	SC	REA	MARB.	BMI\$	CHB\$
3.5	2.6	56	90	27	55	1.1	.46	.14	370	122

- CED — Calving Ease Direct**
- BW — Birth Weight**
- WW — Weaning Weight**
- YW — Yearling Weight**
- MILK**
- M&G — Milk & Growth**
- SC — Scrotal Circumference**
- CEM — Calving Ease Maternal**
- REA — Ribeye Area**
- MARB. — Marbling**
- BMI — Baldy Maker Index**
- CHB — Certified Hereford Beef Index**



SCROTAL EVALUATION

Age in Months	12-14	15-20	21-30	30 plus
Acceptable Range (cm)	30-35	31-37	32-39	33-40

SC — SCROTAL CIRCUMFERENCE:

A measure of fertility. Testicle size indicated by scrotal circumference measured in centimeters is a highly heritable trait very much correlated to reproductive efficiency. A valuable indicator of bull fertility and puberty, and highly related to early puberty in heifers and cow fertility, increased bull scrotal circumference should improve fertility and inherent cow herd productivity.

Sale Accommodations

Trapper's Inn 701-575-4261
 Cowboy Inn 701-575-4245
 Please reserve rooms ahead of time. Due to oil activity rooms are limited.

Theodore Roosevelt Regional Airport, Dickinson, ND

Special Announcement

Check out our website for further updates, sale bull pictures and videos and sale catalog at www.baumgartencattle.com.

TERMS AND CONDITIONS: Terms of the sale are cash. Every animal will be sold to the highest bidder with the auctioneer settling disputes as to bids. Announced changes in catalog information sale day take precedence over printed material in this catalog. All cattle are the buyer's property as soon as sold. Bull calves returned to seller will be fed free until April 1st. Feeding arrangements will be made on bull calves only. We would appreciate that all bull calves we feed be insured. Neither the owners nor any person connected with this sale or catalog assumes any liability, legal or otherwise. Animals that are being cared for by seller are done so at the purchaser's risk.

EMBRYO TRANSFER PROGRAM: Just a short note here to advise you about some information on our ET program. Please remember that the calves that are ET calves are not raised on their natural mother, but instead a recip cow. Some of these recip cows do not have that natural ability to milk and feed a calf the way the original ET mama cow does. Therefore, sometimes the performance of an ET calf is not as good as her natural calf is, but the genetics are still there to produce that type of performance.

ABSENTEE BIDS: Anyone wishing to bid who cannot attend the sale may place phone or mail bids by contacting Rollie or any sales representative.

HEALTH: Health of the Baumgarten herd is excellent. State is Bovine Brucellosis free and Accredited Bovine Tuberculosis free. Females are officially calthood Bangs vaccinated. Individual health papers will be furnished for shipment anywhere.

REGISTRATION AND TRANSFER:

Registration certificates will be transferred to buyers upon request at seller's expense. When making settlement, buyers must give complete written name and address information for making transfers.

INSURANCE: Joana Friesz 701-400-8744





Learn more at
herefordtruth.com

THE BALD-FACED TRUTH ABOUT HEREFORD GENETICS

7%

**Higher pregnancy
rates**

\$51

**More per cow,
per year**

\$30

**Advantage in feedlot
profitability**

\$20

**Advantage in feed
efficiency**

**Hereford
genetics
maximize the
value of your herd
by leveraging traits
such as fertility, feed
efficiency, docility and
feedlot profitability to your
advantage.**

*Compared to Angus-sired calves. Source: Daley, David A. and Early, Sean P. Impacts of Crossbreeding on Profitability in Vertically Coordinated Beef Industry Marketing Systems. American Hereford Association. Retrieved from https://hereford.org/wp-content/uploads/2017/02/Harris_HeterosisReport.pdf.

57100C06

The Power of Genomically Enhanced EPDs

The American Hereford Association (AHA) has embraced the use of genomics into their genetic evaluation by launching a first of its kind single step analysis that utilizes the marker effects of specific traits. Likewise, AHA is directly estimating accuracy values rather than approximating. The direct estimation of accuracy results in a more conservative value but a more accurate value than previous methodologies. The AHA is producing the most reliable genetic evaluation that is supported by Whole Herd TPR™ and genomics, which will give prospective buyers added confidence in purchasing young and unproven animals.

Buying animals that have a genomic profile incorporated into their Expected Progeny Difference (EPD) offers many advantages that allow for quicker breed and herd improvement. Below is a table showing the average increase in accuracy when buying a young animal with a Genomic Enhanced EPD (GE-EPD) versus an animal without a GE-EPD. Similarly, an effective progeny number increase is listed by trait that shows how many progeny equate to a genomic enhancement of a young animal (e.g. yearling). That's right, buying a young animal that has been genotyped is like having 2-17 progeny, depending on the trait. The proof gained on young, non-parent animals, through a genomic enhancement is valuable and greatly mitigates the risk and allows for more directed selection.



Each animal tested is recognized with the AHA GE-EPD logo.

AHA Trait	Accuracy Improvement	Effective Progeny Number Increase*
Calving Ease	0.09	17
Birth Weight	0.12	8
Weaning Weight	0.14	12
Yearling Weight	0.16	9
Scrotal Circumference	0.17	6
Mature Cow Weight	0.12	4
Udder Suspension	0.17	7
Teat Size	0.17	7
Carcass Weight	0.11	3
Fat	0.08	2
Rib-Eye Area	0.07	2
Marbling	0.10	3

* Effective Progeny Number Increase (EPNI)- EPNI is the difference gained for genotyped animals versus non-genotyped animals.



REFERENCE SIRES

CL 1 DOMINO 2126K 1ET (DLF,HYF,IEF,MSUDE,MDF)



DOB: 1/13/22

Reg. # 44347128

CL 1 DOMINO 0186H
 CL 1 DOMINETTE 6162D
 GB L1 DOMINO 177R
 CL1 DOMINETTE 5198C 1ET
 CL1 DOMINETTE 148Y

HH ADVANCE 3297A ET
 HH MISS ADVANCE 1056Y ET
 CL 1 DOMINO 386A 1ET
 CL 1 DOMINETTE 055X

GB L1 DOMINO 8143M
 GB L1 DOM PRCS 690K
 CL 1 DOMINO 9125W 1ET
 CL 1 DOMINETTE 7136T 1ET

CED	BW	WW	YW	MILK	M&G	REA	MARB.	CHB\$
-2.2	3.8	69	114	33	67	.71	.21	160

One of the most consistent breeding bulls ever used here. You will notice the consistency and quality in his offspring. His sons are short marked, powerful and easy doing. 2126 is backed by an amazing cow, so daughters of his sons will be very maternal. This bull will do big things! 15 sons sell. Owned with Cooper Herefords and Ridder Herefords.



2126K

CL 1 DOMINO 1152J (DLF,HYF,IEF,MSUDE,MDF)



DOB: 1/17/21

Reg. # 44259302

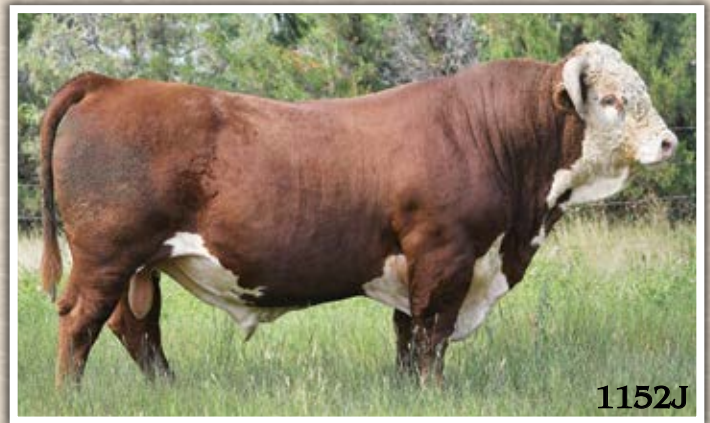
CL 1 DOMINO 9108G 1ET
 CL 1 DOMINETTE 9184W
 HH ADVANCE 5044C ET
 CL1 DOMINETTE 5101C

HH ADVANCE 3297A ET
 HH MISS ADVANCE 1056Y ET
 CL 1 DOMINO 461P 1ET
 L1 DOMINETTE 520

CL 1 DOMINO 215Z
 HH MISS ADVANCE 1072Y ET
 CL 1 DOMINO 1161Y
 CL 1 DOMINETTE 331A

CED	BW	WW	YW	MILK	M&G	REA	MARB.	CHB\$
-1.1	5.2	65	102	25	57	.37	-.05	104

A high-capacity, thick ended beef bull. His sons are high volume, long muscled and thick from end to end! A true cowboy kind! Daughters have beautiful udder development and are the right kind. 10 sons and 2 bred heifers sell. Owned with Cooper Herefords.



1152J

H5 988 ADVANCE 277 (DLF,HYF,IEF,MSUDE,MDF)



DOB: 2/7/22

Reg. # 44355496

H5 5019C ADVANCE 988
 SR 5139R MISS MONTANA 6171 ET

H5 MS 064 SOLUTION 488
 HH MISS ADVANCE 5139R ET

NJW 73S W18 HOMETOWN 10Y ET
 HH MISS ADVANCE 5139R ET

CL 1 DOMINO 215Z
 HH MISS ADVANCE 1072Y ET
 H5 SOLUTION 064
 H5 MS 632 DOMET 1261

SHF WONDER M326 W18 ET
 NJW P606 72N DAYDREAM 73S
 CL 1 DOMINO 2136M
 HH MS ADVANCE 8037H

CED	BW	WW	YW	MILK	M&G	REA	MARB.	CHB\$
+2.8	3.8	67	120	28	61	.76	.32	158

New herd sire added for his pigment performance and carcass quality. He has a very impressive set of numbers to back him up in both growth and carcass. Sons are stylish with great rib shape and packed full of muscle. 277 is picture perfect as a mature bull. 8 sons sell in sale. Owned with Harrell Herefords.



277

REFERENCE SIRES

SHF HOUSTON D287 H086 (CHB,DLF,HYF,IEF,MSUDF,MDF,DBF)

DOB: 2/8/20

Reg. # P44123641



SHF YORK 19H Y02
SHF DAYBREAK Y02 D287 ET
SHF MISS M326 T08 ET

MSU MF HUDSON 19H
LOEWEN MISS P20 10W
KCF BENNETT 3008 M326
SHF POSTIVE MISS 73C M15

LOEWEN 44X 6X 20Z
SHF MISS 14 20Z D223
SHF RADAR R125 T75

LOEWEN DURANGO 344N 44X ET
LOEWEN MISS 33T 5S 6X
SHF RADAR M326 R125
SHF DOMINETTE 2C L42

CED	BW	WW	YW	MILK	M&G	REA	MARB.	CHB\$
+0.9	3.5	84	136	29	71	.97	.23	178

All sire used for unmatched growth and carcass combination. His dam is spectacular with a beautiful udder. His sons have been sought after throughout the country. A consistent breeder that added a ton of length, cherry red color/great eye pigment explosive growth and high indexes. 7 polled sons sell.



BCC SUNRISE 243K ET (DLF,HYF,IEF,MSUDF,MDF,DBF)

DOB: 2/6/22

Reg. # P44362272



SHF YORK 19H Y02
SHF DAYBREAK Y02 D287 ET
SHF MISS M326 T08 ET

MSU MF HUDSON 19H
LOEWEN MISS P20 10W
KCF BENNETT 3008 M326
SHF POSTIVE MISS 73C M15

GERBER ANODYNE 001A
SHF TIME 001A D81
SHF TIME 42X A140

KCF BENNETT 9126J R294
GERBER 627S HOLLY 096Y
K&B SENTINEL 0042X
KJ 796P TIMEWISE 006W ET

CED	BW	WW	YW	MILK	M&G	REA	MARB.	CHB\$
+14.7	-1.1	67	105	30	63	.51	.23	131

Our popular high seller from 2023, he sure knocked it out of the park in his rookie year. Calves came light and grew big. They are dark cherry red, long and correct with most being homozygous polled. 243 did a tremendous job and will see heavy use in the future. He's a herd builder and his sons will be as well. He is backed by a great cow. 8 sons sell. Owned with ABS Global.



CSC 913 ACCOMPLICE 208 (DLF,HYF,IEF,MSUDF,MDF,DBF)

DOB: 3/1/22

Reg. # P44364993



TH 22R 16S LAMBEAU 17Y
CSC 701 BOLDER 901
CSC 502 LADY DEW 701

TH 121L 63N TUNDRA 16S
TH 62N 3L KELSEY 22R
CHURCHILL SENSATION 028X
CSC 10Y LADY DEW 502 ET

CHURCHILL JR FRONTLINE 6200D
CSC 1211 JEWEL 913
MC 4037 JEWEL 1211

CHURCHILL MANHATTAN 428B ET
H MS 0103 MARIAH 4437 ET
THM DURANGO 4037
MC P316 JEWEL W9118 ET

CED	BW	WW	YW	MILK	M&G	REA	MARB.	CHB\$
+4.4	0.9	60	101	43	73	.43	.00	94

New herd sire that implements pigment, performance and sogginess. Sons are easy fleshing, moderate framed, good haired and very similar in type & kind. Look up his sons if you like cattle with a little more power and punch. 8 sons sell.



REFERENCE DAMS



SHF TIME 001A D81 - P43676395

D81 (Dorothy) has really hit it out of the park here in the last two years. In 2023 her son, Sunrise, topped our sale to ABS. She has left her mark in the breed and will continue to for years to come. We are confident that she will transfer her amazing udder and teat structure, mothering ability, calving ease, and performance into her descendants for generations to come. She will be a building block for our Polled herd for a long time. She has 12 daughters in production that have an average WW ratio of 101.9 on 27 calves. Direct sons sell as 4149 and 4156. Direct daughter 3163. Grandsons 409, 410, 419, 422, 466, 469 and 4144. Great grandson 417.

CED	BW	WW	YW	MILK	M&G	REA	MARB.	CHB\$
+12.9	-1.9	59	90	32	61	.25	.18	129

BCC L1 DOMINETTE 454B - 43511126

Another picture-perfect cow in terms of phenotype and udder quality. A top producer that raised our top seller in 2021 to John David Moore of Texas. She has been flushed multiple times and held a calving interval of 372 days as well as ratioing 100.8 on BW, 101.1 WW and 103.3 YW on 8 head. There is high fertility coupled with great milk as well as perfect feet and legs at 10 years old from this donor. Direct sons sell as 4161, 3215. Direct daughters 3164 & 4203.

CED	BW	WW	YW	MILK	M&G	REA	MARB.	CHB\$
+3.6	2.8	51	81	27	53	.28	.15	117

CL 1 DOMINETTE 617S - 42673551

617 has more influence in our herd than any other cow we have. In her lifetime she has produced 106 head through ET & natural calves. If you really want to take this to another level she has held together an impressive udder, ideal feet and body condition even at 12 years of age. She has fed a big calf every year of her life ratioing 101 BW, 107.4 WW. 41 daughters average 101.9 WW ratio on 152 calves. That is proof of good milk. Good cattle out produce themselves for generations to come and that is what she has done for us. Her influence in this year's sale includes sons 3407 & 3409, grandsons 452, 479, 480, 498, 4183 and granddaughter 3122.

CED	BW	WW	YW	MILK	M&G	REA	MARB.	CHB\$
+5.0	3.3	48	70	34	57	.32	-.09	88

BCC L1 TAMA 542CET - 43623983

Straight L1 maternal icon here at the Baumgarten ranch. At 9 years old she has maintained a perfect udder and foot quality. She is the kind of cow that is ultra feminine fronted, moderate and will raise the biggest calf. She will out produce herself with almost any bull she gets bred to. She's the ideal functional, top-notch producer. Ratios 98.6 BW & 106 WW on 9 head with an average calving interval of 373 days. She has 5 daughters in production, with 11 calves that have an average WW ratio 108.6. Direct sons that are full brothers sell as 452, 479, 480, 498. Grandson 4183.

CED	BW	WW	YW	MILK	M&G	REA	MARB.	CHB\$
+7.0	0.9	45	70	49	71	.12	.05	92

Footnote Guide:

We feel we know our cattle to a high degree. With that said our footnotes are merely a guide to how each individual can be expected to perform for you. With enhanced GE EPDs there is more confidence as to how a bull will breed, yet still never 100%.

When we explain Top % for traits this means they are outliers within the entire breed and in the top %. For example Top 5% for CE & BW means they're in the top 5% of the breed for CE & BW. CE-calving ease, BW-birth weight, WW-weaning weight, YW-yearling weight, SC-scrotal circumference, MM-milk, M&G-milk and growth, UDDR-udder quality, TEAT-teat size, REA-ribeye area, MARB-marbling, BMI-Baldy Maker Index, CHB-Certified Hereford Beef.

Ratios for BW and WW mean that individual's ratios for actual birth weight and 205-weight within our herd and their age group (contemporary groups). EP stands for eye pigment, LE is left eye and RE is right eye. For example 100% EP LE & RE means that bull has 100% eye pigment in both eyes. We hope you take the time to read our footnotes and we are only one call away to find the best bull for your program.

409

BCC SLICK TRICK 409 M

DOB: 1/14/24

Reg. # P44585339



BCC SUNRISE 243K ET
SHF DAYBREAK Y02 D287 ET
SHF TIME 001A D81

SHF YORK 19H Y02
SHF MISS M326 T08 ET
GERBER ANODYNE 001A
SHF TIME 42X A140

BW	205
63	769

BCC KARLA 212K
JDH AH PROMINENT 21G ET
BCC KARLA 009H

JDH 11B STUD 3134 63E
JDH AH MS 34X VICTOR 33Z45C ET
NJW 135U 10Y HOMETOWN 27A
BCC KARLA 8117F ET

CE	BW	WW	YW	MILK	M&G	SC	REA	MARB.	BMI\$	CHB\$
+9.3	-0.7	66	100	29	63	1.4	.31	.29	464	119

Scurred. Heifer bull. Dark red and long with a heavy milking dam. Check out his spread from birth to weaning. Ratioed 84 on BW and 116 on WW. Top 1% UDDR, 5% BW & TEAT, 10% CE, WW, MARB, BMI, BII. Goggle eyed.



410

BCC MOSSBERG 410M

DOB: 1/14/24

Reg. # P44594779



BCC SUNRISE 243K ET
SHF DAYBREAK Y02 D287 ET
SHF TIME 001A D81

SHF YORK 19H Y02
SHF MISS M326 T08 ET
GERBER ANODYNE 001A
SHF TIME 42X A140

BW	205
64	643

BCC JENNY 216K
BCC BULLSEYE 923G ET
BCC JENNY 016H

CRR 109 ON POINT 559 ET
BCC LACEY 048X
AH JDH MUNSON 15E ET
BCC JENNY 856F

CE	BW	WW	YW	MILK	M&G	SC	REA	MARB.	BMI\$	CHB\$
+14.4	-2.1	55	88	28	56	0.8	.29	.37	392	129

Polled heifer bull that is backed by generations of calving ease and tight udders. Top 2% CE, BW 6%, MARB. 100% eye pigment.



Baumgarten Cattle will be supporting the Heartland Horizons 4-H club. The club will be having a bake sale at the beginning and end of the bull sale. Any support of the 4-H club is appreciated.

There will also be an auction item of hand-made leather earrings donated by Kyle Pennington and all proceeds will go towards raising money for the 4-H club.

YEARLING BULLS



415M

415

BCC DOMINO 415M

DOB: 1/15/24

Reg. # 44585359



CL 1 DOMINO 212K 1ET

CL 1 DOMINO 001H

CL 1 DOMINO 776E 1ET
CL 1 DOMINETTE 8150F
HH ADVANCE 4067B ET
CL 1 DOMINETTE 9140W 1ET

BCC MEDORA 280K

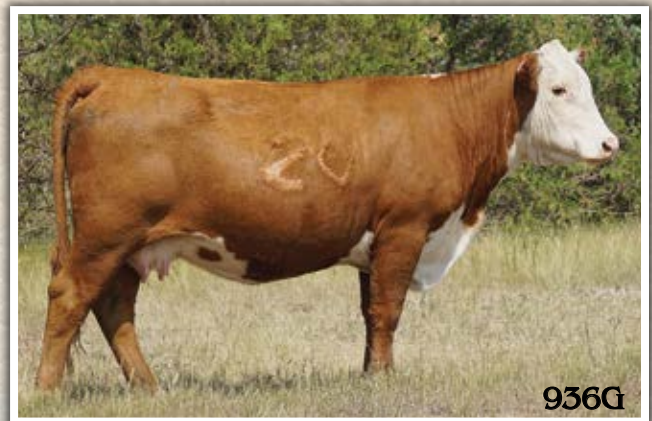
BCC DOMINATOR 619D

BCC MISS ADVANCE 936G

CL 1 DOMINO 215Z
BCC MISS BELL 206Z
HH ADVANCE 5337C ET
BCC L1 L1 DOMINETTE 502C

BW	205	CED	BW	WW	YW	MILK	M&G	SC	REA	MARB.	BMI\$	CHB\$
71	687	+3.2	2.1	68	106	35	69	1.3	.40	.32	356	148

Horned herd bull. Stylish powerhouse. Raised on a beautifully uddered 619 daughter. Royally bred breeding bull. Solid EPD profile. Ratioed 95 on BW, 103 on WW. Will keep a 1/4 in herd semen use. Top 5% M&G, 10% WW, MM, MARB, 11% CW. 100% eye pigment.



936G

BCC Miss Advance 936G. Grandam of 415.

417

BCC KID ROCK 417M

DOB: 1/16/24

Reg. # P44585431



KCF BENNETT BEDROCK H642

R LANDMARK 4386

KCF MISS CUDA F565

HYALITE ON TARGET 936
R MISS REVOLUTION 3032
BEHM 100W CUDA 504C
KCF MISS 2107 B629

BCC HADLEY 2169K

SHF HARVEST D287 H033 ET

BCC L1 DOMINETTE 226Z

SHF DAYBREAK Y02 D287 ET
SHF TIME 001A D81
CL 1 DOMINO 9125W 1ET
BCC HARITTE 876U ET

BW	205	CED	BW	WW	YW	MILK	M&G	SC	REA	MARB.	BMI\$	CHB\$
74	812	+8.8	0.9	73	117	43	79	1.4	.57	.22	318	123

Small scurs. Kid Rock is a powerful bull with calving ease. Heaviest WW bull in the sale with a ratio of 122. Great EPD profile. Top 1% MM, M&G, Top 3% WW, YW, 10% CE, 20% BW, SC. 100% pigment both eyes.



417M



419

BCC SUNSHINE 419M

DOB: 1/17/24

Reg. # P44585435



BCC SUNRISE 243K ET

SHF DAYBREAK Y02 D287 ET
SHF TIME 001A D81

SHF YORK 19H Y02
SHF MISS M326 T08 ET
GERBER ANODYNE 001A
SHF TIME 42X A140

BW	205
74	670

BCC LORENA 2192K

SR DISPATCH 638F

BCC BILLY THE KID 330A
SR SENITA 270Z
UPS DOMINO 3027
CL 1 DOMINETTE 617S

BCC DOMINETTE 6104D ET

CED	BW	WW	YW	MILK	M&G	SC	REA	MARB.	BMI\$	CHB\$
+6.4	2.2	70	114	37	72	1.4	.72	.15	481	144

Polled. Big spread on his EPD profile with a long line of great cow families. Big CHB. Moderate and long. Top 5% WW, YW, M&G, BMI, 10% MM, REA, 15% SC, TEAT, BII and CHB. 100% eye pigment.

422

BCC SUNSHINE 422M

DOB: 1/19/24

Reg. # P44585440



BCC SUNRISE 243K ET

SHF DAYBREAK Y02 D287 ET
SHF TIME 001A D81

SHF YORK 19H Y02
SHF MISS M326 T08 ET
GERBER ANODYNE 001A
SHF TIME 42X A140

BW	205
74	750

BCC DAFNEE 2148K

CRR 109 ON POINT 559 ET

CRR 719 CATAPULT 109

BCC DAFNEE 764E

CRR 435 KELLY 161
BCC L1 DOMINO 489B
BCC MISS MAYBERRY 523C ET

CED	BW	WW	YW	MILK	M&G	SC	REA	MARB.	BMI\$	CHB\$
+6.5	1.9	66	106	35	68	1.2	.55	.10	381	124

Homozygous polled. Solid EPD profile. Balanced look with a ton of shape and love his easy doing mother. A bull that gets better every day. Ratioed 111 on WW. Top 8% MM & M&G, 15% WW, YW, TEAT. 100% pigment both eyes.

423

BCC DOMINO 423M

DOB: 1/19/24

Reg. # 44585441



CL 1 DOMINO 212K 1ET

CL 1 DOMINO 001H
CL 1 DOMINETTE 656D

CL 1 DOMINO 776E 1ET
CL 1 DOMINETTE 8150F
HH ADVANCE 4067B ET
CL 1 DOMINETTE 9140W 1ET

BCC MEDORA 267K

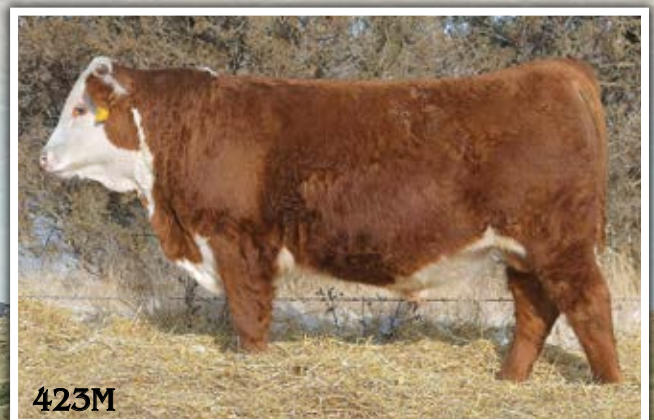
HH ADVANCE 0025H ET

CL 1 DOMINO 883F 1ET
HH MISS ADVANCE 1010Y ET
BCC L1 DOMINO 626D ET
BCC L1 ADVANCE 6154D

BCC MEDORA 823F

BW	205	CED	BW	WW	YW	MILK	M&G	SC	REA	MARB.	BMI\$	CHB\$
69	596	+6.2	1.1	52	71	38	64	1.4	.12	.26	471	113

Horned heifer bull. Classy moderate and thick topped. Lots of milk coupled with good udders. Top 3% MM, 10% UDDR, BMI, BII, 15% SC, UDDR, MM, 20% BW and MARB. 100% eye pigment.



423M



425M

425

BCC DIAMOND 425M

DOB: 1/21/24

Reg. # 44585443



CL 1 DOMINO 2126K 1ET

CL 1 DOMINO 0186H

HH ADVANCE 7156E ET
CL 1 DOMINETTE 6162D
GB L1 DOMINO 177R
CL1 DOMINETTE 148Y

CL1 DOMINETTE 5198C 1ET

BCC MEDORA 2107K

HH ADVANCE 0025H ET

CL 1 DOMINO 883F 1ET
HH MISS ADVANCE 1010Y ET
BCC DOMINATOR 619D
BCC L1 DOMINETTE 382A

BCC DOMINATOR 9107G

BW	205	CED	BW	WW	YW	MILK	M&G	SC	REA	MARB.	BMI\$	CHB\$
77	727	+2.3	1.9	64	104	35	67	1.6	.69	.33	492	169

Horned herd bull deluxe. He'll give you extra length and big time growth. Big dark scrotal with plenty of frame. His grandma has been one of our top producers for high end females. Pair that with 2126 and his sons and daughters should be incredible! His carcass figures are an added bonus. Ratioed 110 on WW. Top 1% CW, 4% BMI, BII, & CHB, 10% MM, M&G, UDDR, MARB, 15% YW, TEAT & REA, 20% WW. Goggle eyed. Retaining 1/2 possession & 1/2 semen interest. Buyer has first choice on possession.



426

BCC MEDORA 426M

DOB: 1/21/24

Reg. # 44585445



CL 1 DOMINO 2126K 1ET

CL 1 DOMINO 0186H

HH ADVANCE 7156E ET
CL 1 DOMINETTE 6162D
GB L1 DOMINO 177R
CL1 DOMINETTE 148Y

CL1 DOMINETTE 5198C 1ET

BCC MEDORA 2134K

CL 1 DOMINO 917G

HH ADVANCE 7156E ET
CL 1 DOMINETTE 7111E
CL 1 DOMINO 105Y
BCC L1 MEDORA 714

BCC MEDORA 555C

BW	205	CED	BW	WW	YW	MILK	M&G	SC	REA	MARB.	BMI\$	CHB\$
70	694	+6.5	1.5	60	98	33	63	1.5	.58	.02	435	127

Horned heifer bull loaded with productive cows. High capacity, thick from end to end easy fleshing. Top 10% SC, UDDR, 15% MM, CW, BMI, 20% M&G and BII. 100% eye pigment.



426M

431

BCC DOMINATOR 431M

DOB: 1/27/24

Reg. # 44595809



CL 1 DOMINO 2126K 1ET

CL 1 DOMINO 0186H
CL1 DOMINETTE 5198C 1ET

HH ADVANCE 7156E ET
CL 1 DOMINETTE 6162D
GB L1 DOMINO 177R
CL1 DOMINETTE 148Y

BCC MEDORA 1300J ET

HH ADVANCE 8392F ET
BCC SHEDAISY 018X

HH ADVANCE 5345C
HH MISS ADVANCE 2022Z ET
BCC HARLEY 884U ET
B&B L1 DOMINETE 275

BW	205	CED	BW	WW	YW	MILK	M&G	SC	REA	MARB.	BMI\$	CHB\$
86	755	+1.5	4.8	76	121	34	72	1.5	.72	.22	420	166

Homed. Will raise big feeders that will make big profit right off the cow all the way to slaughter. Ratioed 113 on WW. Top 2% WW, YW, CW, 4% CHB, 10% MM, REA, 15% BII, 20% BMI, 25% Marb, BMI. 100% eye pigment.



431M

441

BCC ACCOMPLISHMENT 441M

DOB: 2/7/24

Reg. # 44539375



CSC 913 ACCOMPLICE 208

CSC 701 BOLDER 901
CSC 1211 JEWEL 913

TH 22R 16S LAMBEAU 17Y
CSC 502 LADY DEW 701
CHURCHILL JR FRONTLINE 6200D
MC 4037 JEWEL 1211

BCC MEDORA 2217K

CL 1 DOMINO 917G
BCC DOMINETTE 774E

HH ADVANCE 7156E ET
CL 1 DOMINETTE 7111E
CL1 DOMINO 5110C
BCC L1 DOMINETTE 454B

BW	205	CED	BW	WW	YW	MILK	M&G	SC	REA	MARB.	BMI\$	CHB\$
92	661	-1.6	3.8	61	100	39	69	1.8	.19	-.16	437	75

Polled. Power bull, weaned off big and gained like crazy on feed. Long hiped with big testicle development. Top 5% SC, MM, M&G, TEAT, 10% UDDR, 15% BMI, 20% BII. 100% pigment right eye.



441M

444

BCC DIAMOND 444M

DOB: 2/8/24

Reg. # 44539302



CL 1 DOMINO 2126K 1ET

CL 1 DOMINO 0186H
CL1 DOMINETTE 5198C 1ET

HH ADVANCE 7156E ET
CL 1 DOMINETTE 6162D
GB L1 DOMINO 177R
CL1 DOMINETTE 148Y

BCC MEDORA 2153K

HH ADVANCE 0025H ET
BCC MEDORA 836F

CL 1 DOMINO 883F 1ET
HH MISS ADVANCE 1010Y ET
CL1 DOMINO 412B
BCC L1 MEDORA 757

BW	205	CED	BW	WW	YW	MILK	M&G	SC	REA	MARB.	BMI\$	CHB\$
77	746	+1.2	2.5	64	103	43	75	1.0	.37	.39	475	166

Homed. A very unique bull. High end maternal value. If you like heavy milking cows with great udders he is your dude. Added carcass value here. Tipped the scale at weaning and ratioed 112 on WW. Top 1% MM, M&G, CW, 5% TEAT, BMI, CHB, 10% UDDR, MARB, BMI, 20% WW, YW. Goggle eyed.



444M

445

BCC HOUSTON 445M ET

DOB: 2/8/24

Reg. # P44595807



SHF HOUSTON D287 H086

SHF DAYBREAK Y02 D287 ET
SHF MISS 14 20Z D223

SHF YORK 19H Y02
SHF MISS M326 T08 ET
LOEWEN 44X 6X 20Z
SHF RADAR R125 T75

BCC LUCY 835F ET

GKB 88X LARAMIE B293
CL 1 DOMINETTE 352A 1ET

NJW 98S R117 RIBEYE 88X ET
GKB S&S GOLD APRIL B928 ET
CL 1 DOMINO 105Y
CL 1 DOMINETTE 7136T 1ET

BW	205	CED	BW	WW	YW	MILK	M&G	SC	REA	MARB.	BMI\$	CHB\$
84	648	-0.1	3.2	73	115	37	74	1.5	.50	.07	428	123

Polled. 445 and 484 are full brothers with a ton of performance coupled with good carcass figures. They are thick butted, big topped, dark, big testicled, stylish rascals. Top 5% WW, YW, MM and M&G, 10% SC, UDDR, 20% TEAT, BMI, BII. 90% pigment right eye, 100% left eye.



445M

YEARLING BULLS

446

BCC ACCOMPLISHMENT 446M

DOB: 2/9/24

Reg. # P44539303



CSC 913 ACCOMPLICE 208

CSC 701 BOLDER 901

CSC 1211 JEWEL 913

TH 22R 16S LAMBEAU 17Y
CSC 502 LADY DEW 701
CHURCHILL JR FRONTLINE 6200D
MC 4037 JEWEL 1211

BCC MEDORA 207K

CL 1 DOMINO 917G

BCC DEMAND 008H

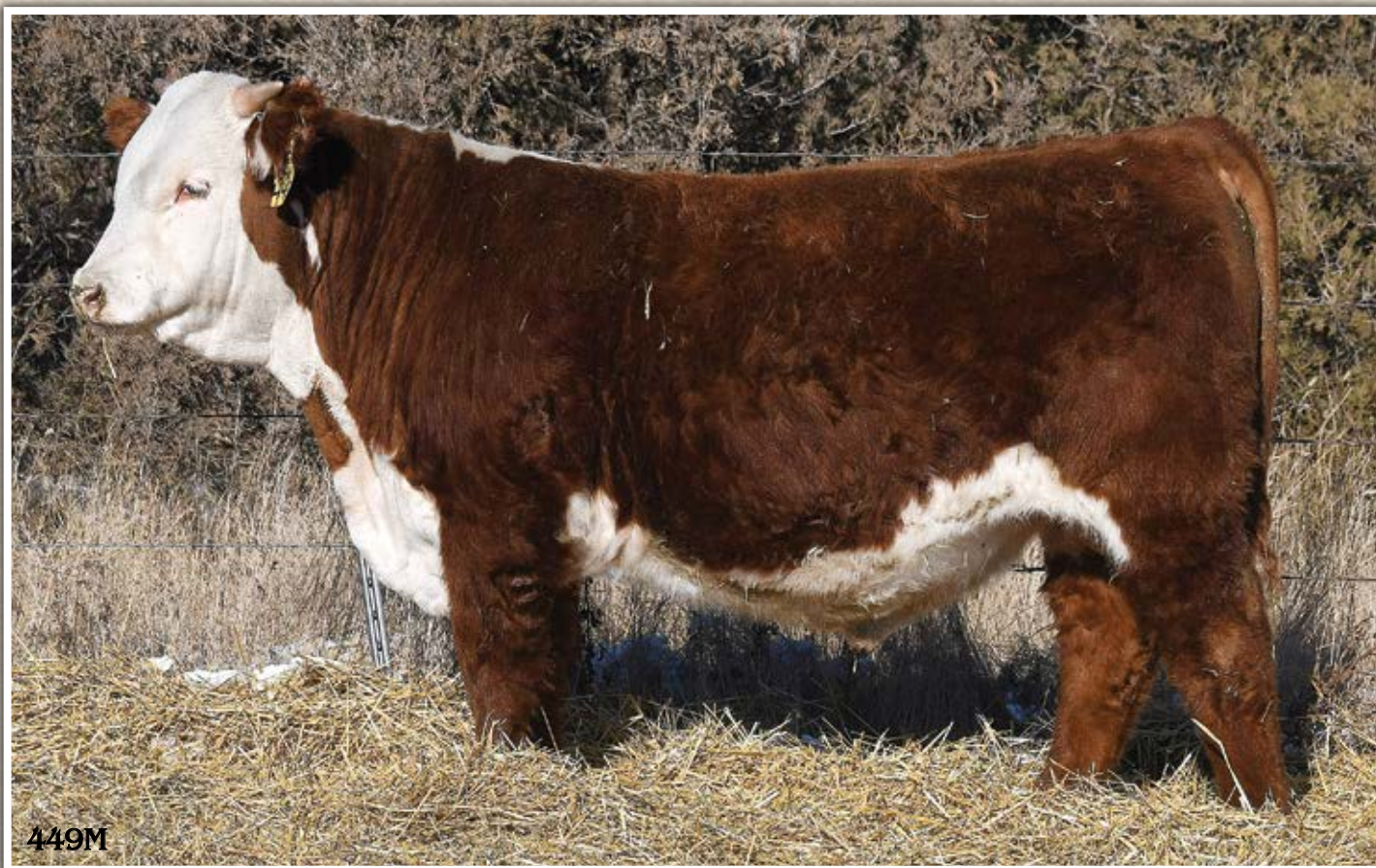
HH ADVANCE 7156E ET
CL 1 DOMINETTE 7111E
BCC DEMAND 765E
BCC DOMINETTE 837F

BW	205	CED	BW	WW	YW	MILK	M&G	SC	REA	MARB.	BMI\$	CHB\$
70	670	+9.2	0.1	58	89	33	63	1.3	.31	.07	498	98

Polled. Heifer bull. Good haired, easy doing, loose made thick rascal. Top 5% TEAT, BMI, BII, 10% CE, BW, UDDR, 15% MM, M&G. Goggle eyed.



446M



449M

449

BCC DOMINO 449M

DOB: 2/11/24

Reg. # 44585457



CL 1 DOMINO 2126K 1ET

CL 1 DOMINO 0186H

CL1 DOMINETTE 5198C 1ET

HH ADVANCE 7156E ET
CL 1 DOMINETTE 6162D
GB L1 DOMINO 177R
CL1 DOMINETTE 148Y

BCC L1 MEDORA 046H

HH ADVANCE 5337C ET

BCC DOMINETTE 551C

HH ADVANCE 2217Z
HH MISS ADVANCE 6033S ET
CL 1 DOMINO 105Y
BCC L1 DOMINETTE 632

BW	205	CED	BW	WW	YW	MILK	M&G	SC	REA	MARB.	BMI\$	CHB\$
89	660	-1.0	4.3	62	99	31	61	0.6	.55	.08	386	131

Horned. A very solid bull with a ton of length, frame and power. Will add many pounds to a cross breeding program. Top 10% UDDR, TEAT, CW, 25% WW, YW, CHB. 90% pigment right eye, 80% left eye.



046H

BCC L1 Medora 046H. Dam of 449.

YEARLING BULLS



452M

452

BCC L1 DIAMOND 452M ET

DOB: 2/11/24

Reg. # 44585460



CL 1 DOMINO 2126K 1ET

CL 1 DOMINO 0186H

HH ADVANCE 7156E ET
CL 1 DOMINETTE 6162D
GB L1 DOMINO 177R
CL 1 DOMINETTE 5198C 1ET
CL 1 DOMINETTE 148Y

BW	205
78	679

BCC L1 TAMA 542CET

CL 1 DOMINO 105Y

CL 1 DOMINO 929W
CL 1 DOMINETTE 9140W 1ET
HH ADVANCE 3113N 1ET
CL 1 DOMINETTE 4180P

CL 1 DOMINETTE 617S

CED	BW	WW	YW	MILK	M&G	SC	REA	MARB.	BMI\$	CHB\$
+2.5	2.6	56	92	45	73	1.0	.25	.12	473	112

Straight Line 1 Herd bull. This bull has multiple generations of incredible, great uddered females including, 542C, 617S, 5198C and 6162D. Royally bred for maternal greatness and has the power to be a great breeding bull. The consistency of this flush is outstanding. Full brothers sell as 479, 480, 498. Top 1% MM, 2% MG, 10% BMI, BII. Will keep a 1/4 in herd semen use. 100% eye pigment.

453

BCC ACCOMPLISHMENT 453M

DOB: 2/11/24

Reg. # P44539310



CSC 913 ACCOMPLICE 208

CSC 701 BOLDER 901

TH 22R 16S LAMBEAU 17Y
CSC 502 LADY DEW 701
CHURCHILL JR FRONTLINE 6200D
MC 4037 JEWEL 1211

BW	205
82	761

BCC MEDORA 229K

HH ADVANCE 8392F ET

HH ADVANCE 5345C
HH MISS ADVANCE 2022Z ET
BCC DEMAND 765E
BCC DOMINETTE 649D

BCC MEDORA 0162H

CED	BW	WW	YW	MILK	M&G	SC	REA	MARB.	BMI\$	CHB\$
+0.2	3.2	72	116	42	78	1.8	.38	.12	437	116

Scurred. A 208 son with a little more frame. Performance on paper and on the hoof. Ratioed 115 on WW! He will raise some awesome feeders and high milking, productive cows. Top 1% M and M&G, 2% SC, 4% WW, YW, 15% TEAT, BMI, BII. 100% pigment right eye, 75% left eye.



453M

YEARLING BULLS



466M

466

BCC ALPHA 466M

DOB: 2/14/24

Reg. # P44594782



BCC SUNRISE 243K ET

SHF DAYBREAK Y02 D287 ET
SHF TIME 001A D81

SHF YORK 19H Y02
SHF MISS M326 T08 ET
GERBER ANODYNE 001A
SHF TIME 42X A140

BCC JENNY 1133J

HCC RIO GRANDE 9101 G ET
BCC JENNY 868F

HILLS-GALORE 44Z RESOLUTE 128D
CHURCHILL LADY 002X ET
NJW 84B 10W JOURNEY 53D
BCC DREAMY 359A ET

BW	205	CED	BW	WW	YW	MILK	M&G	SC	REA	MARB.	BMI\$	CHB\$
75	716	+6.3	3.0	68	117	25	59	1.4	.74	.05	315	110

HOMOZYGOUS POLLED. Big bodied, moderate framed and simply thick. Powerful. Ratioed 94 on BW and 108 on WW. Top 3% YW, 10% WW, REA, 13% SC. 80% pigment right eye, 100% left eye.



017H

BCC Tama 017H. Dam of 469.

469

BCC SUNSHINE 469M

DOB: 2/14/24

Reg. # P44595800



BCC SUNRISE 243K ET

SHF DAYBREAK Y02 D287 ET
SHF TIME 001A D81

SHF YORK 19H Y02
SHF MISS M326 T08 ET
GERBER ANODYNE 001A
SHF TIME 42X A140

BCC TAMA 017H

NJW 84B 10W JOURNEY 53D
BCC TAMA 8107F

LJR 023R WHITMORE 10W
NJW 16S 100W JOEY 84B ET
LSW WCC ABOUT TIME X06
CL 1 DOMINETTE 617S

BW	205	CED	BW	WW	YW	MILK	M&G	SC	REA	MARB.	BMI\$	CHB\$
76	713	+9.7	0.9	64	88	29	61	1.5	.57	-.02	381	98

Polled. These Sunrises just keep coming. Thick backed and big butted with rib! Females should be beautiful by 469. Ratioed 94 on BW and 108 on WW. Top 10% CE, SC, 20% BW, WW.



469M

YEARLING BULLS

479

BCC L1 DIAMOND 479M ET

DOB: 2/15/24

Reg. # 44594804



CL 1 DOMINO 2126K 1ET

CL 1 DOMINO 0186H
CL1 DOMINETTE 5198C 1ET

HH ADVANCE 7156E ET
CL 1 DOMINETTE 6162D
GB L1 DOMINO 177R
CL1 DOMINETTE 148Y

BCC L1 TAMA 542CET

CL 1 DOMINO 105Y
CL 1 DOMINETTE 617S

CL 1 DOMINO 929W
CL 1 DOMINETTE 9140W 1ET
HH ADVANCE 3113N 1ET
CL 1 DOMINETTE 4180P

BW	205	CED	BW	WW	YW	MILK	M&G	SC	REA	MARB.	BMI\$	CHB\$
87	588	+2.2	3.0	53	83	40	67	0.8	.22	.20	507	115

Straight Line 1 — 2126 x 542. Any of these full brothers will add maternal strength and give you SMOKING GOOD, milky baldies or straight Hereford replacements. Full brother to 452, 480 & 498. Top 2% MM, 5% M&G, BMI and BII, 12% TEAT. 100% eye pigment.



479M

480

BCC L1 DIAMOND 480M ET

DOB: 2/15/24

Reg. # 44594805



CL 1 DOMINO 2126K 1ET

CL 1 DOMINO 0186H
CL1 DOMINETTE 5198C 1ET

HH ADVANCE 7156E ET
CL 1 DOMINETTE 6162D
GB L1 DOMINO 177R
CL1 DOMINETTE 148Y

BCC L1 TAMA 542CET

CL 1 DOMINO 105Y
CL 1 DOMINETTE 617S

CL 1 DOMINO 929W
CL 1 DOMINETTE 9140W 1ET
HH ADVANCE 3113N 1ET
CL 1 DOMINETTE 4180P

BW	205	CED	BW	WW	YW	MILK	M&G	SC	REA	MARB.	BMI\$	CHB\$
89	646	+2.3	2.8	59	93	44	73	0.7	.27	.10	470	113

Straight Line 1 — 2126 x 542. Any of these full brothers will add maternal strength and give you SMOKING GOOD, milky baldies or straight Hereford replacements. Full brother to 452, 479 & 498. Top 2% MM, 5% M&G, BMI and BII, 12% TEAT. 100% eye pigment.



480M

481

BCC ACCOMPLISHMENT 481M

DOB: 2/15/24

Reg. # P44594815



CSC 913 ACCOMPLICE 208

CSC 701 BOLDER 901
CSC 1211 JEWEL 913

TH 22R 16S LAMBEAU 17Y
CSC 502 LADY DEW 701
CHURCHILL JR FRONTLINE 6200D
MC 4037 JEWEL 1211

BCC HOLLY 0174H

HAROLDSON'S UPGRADE T100 33D
BCC MISS MAYBARRY 0122X

SHF TAHOE R117 T100
MOHICAN MISSEY 93W
TFR HIGH COTTON 328 ET
BCC SAPPHIRE 480

BW	205	CED	BW	WW	YW	MILK	M&G	SC	REA	MARB.	BMI\$	CHB\$
86	678	-3.0	4.3	65	105	31	64	1.1	.58	.03	440	104

Small scurs. This burly dude is stout and full of muscle with extra capacity. Top 5% TEAT, 10% UDDR, 15% WW, YW, M&G, BMI, BII. 100% pigment right eye, 80% left eye.



481M

60 Bulls in the sale in the top 35% of the breed for UDDER, TEAT and BII.
50 Bulls in the sale in the top 35% for WW, YW, MM, and BMI.
45 Bulls in the sale in the top 35% for CHB.

YEARLING BULLS



482M

482 BCC HELIX 482M

DOB: 2/16/24

Reg. # 44594817



H5 988 ADVANCE 277

H5 5019C ADVANCE 988

HH ADVANCE 5019C ET
H5 MS 064 SOLUTION 488
NJW 73S W18 HOMETOWN 10Y ET
HH MISS ADVANCE 5139R ET

SR 5139R MISS MONTANA 6171 ET

BCC KARLA 019H

NJW 135U 10Y HOMETOWN 27A

NJW 73S W18 HOMETOWN 10Y ET
NJW 4037 34S DURANGO VACA 135U
CRR 109 ON POINT 559 ET
BCC LACEY 048X

BCC KARLA 8122F ET

BW	205	CED	BW	WW	YW	MILK	M&G	SC	REA	MARB.	BMI\$	CHB\$
78	662	+0.5	3.5	61	106	27	58	1.2	.52	.26	466	136

Horned. Possesses a big square hip, awesome structure and dark testicles. His mother is truly amazing with a near perfect udder and phenotypically awesome. There isn't a hole in this bull. Dam ratios 99 on BW and 101 on WW. Top 5% UDDR & TEAT, top 15% YW, BMI, BII. 100% eye pigment. Will keep 1/4 in herd semen use.



483 BCC DOMINATION 483M

DOB: 2/16/24

Reg. # 44594820



CL 1 DOMINO 2126K 1ET

CL 1 DOMINO 0186H

HH ADVANCE 7156E ET
CL 1 DOMINETTE 6162D
GB L1 DOMINO 177R
CL1 DOMINETTE 148Y

CL1 DOMINETTE 5198C 1ET

BCC MEDORA 037H ET

BCC DOMINATOR 619D

CL 1 DOMINO 215Z
BCC MISS BELL 206Z
HH ADVANCE 1173Y ET
BCC BABY CHEEKS 2115Z

BCC L1 DOMINETTE 454B

BW	205	CED	BW	WW	YW	MILK	M&G	SC	REA	MARB.	BMI\$	CHB\$
79	654	+2.5	1.4	60	98	31	61	1.4	.46	.13	509	134

Horned. Combine 2126, 619D and 454 and this bull will give you females that will knock your socks off with longevity, tight udders and good milk. This is a good dude phenotypically with moderate birth. Ratioed 97 on BW. Top 1% TEAT, 3% UDDR, BMI, 5% CW, BII, 15% SC, 23% BW. 100% eye pigment. Retaining 1/4 semen interest.



483M

YEARLING BULLS

484

BCC HOUSTON 484M ET

DOB: 2/16/24

Reg. # P44594828



SHF HOUSTON D287 H086

SHF DAYBREAK Y02 D287 ET

SHF MISS 14 20Z D223

SHF YORK 19H Y02
SHF MISS M326 T08 ET
LOEWEN 44X 6X 20Z
SHF RADAR R125 T75

BCC LUCY 835F ET

GKB 88X LARAMIE B293

CL 1 DOMINETTE 352A 1ET

NJW 98S R117 RIBEYE 88X ET
GKB S&S GOLD APRIL B928 ET
CL 1 DOMINO 105Y
CL 1 DOMINETTE 7136T 1ET



484M

BW	205	CED	BW	WW	YW	MILK	M&G	SC	REA	MARB.	BMI\$	CHB\$
96	748	+3.2	3.4	70	115	32	67	1.1	.73	.09	464	127

Scurred. 445 and 484 are full brothers with a ton of performance coupled with good carcass figures. They are thick butted, big topped, dark, big testicled, stylish rascals. Top 5% WW, YW, 10% M&G, REA, UDDR, BMI, BII, 20% MM, UDRR. 100% pigment right eye.



485M

485

BCC ASTRO 485M

DOB: 2/16/24

Reg. # P44594830



SHF HOUSTON D287 H086

SHF DAYBREAK Y02 D287 ET

SHF MISS 14 20Z D223

SHF YORK 19H Y02
SHF MISS M326 T08 ET
LOEWEN 44X 6X 20Z
SHF RADAR R125 T75

BCC DARLA 0104H

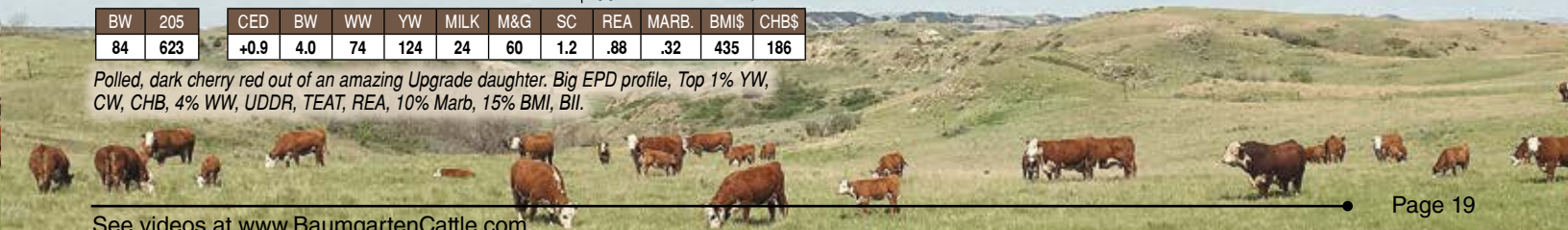
HAROLDSON'S UPGRADE T100 33D

BCC L1 DOMINETTE 566C

SHF TAHOE R117 T100
MOHICAN MISSEY 93W
HH ADVANCE 2029Z ET
BCC L1 DOMINETTE 225Z

BW	205	CED	BW	WW	YW	MILK	M&G	SC	REA	MARB.	BMI\$	CHB\$
84	623	+0.9	4.0	74	124	24	60	1.2	.88	.32	435	186

Polled, dark cherry red out of an amazing Upgrade daughter. Big EPD profile, Top 1% YW, CW, CHB, 4% WW, UDDR, TEAT, REA, 10% Marb, 15% BMI, BII.



YEARLING BULLS

486 BCC ADVANCE 486M

DOB: 2/16/24

Reg. # 44594833



H5 988 ADVANCE 277

H5 5019C ADVANCE 988

SR 5139R MISS MONTANA 6171 ET

HH ADVANCE 5019C ET
H5 MS 064 SOLUTION 488
NJW 73S W18 HOMETOWN 10Y ET
HH MISS ADVANCE 5139R ET

BCC TAMA 151J

ECR 628 ADVANCE 8014

BCC L1 TAMA 9131G

H FHF ADVANCE 628 ET
ECR 0132 DOMINETTE 3374
CL1 DOMINO 5110C
BCC L1 TAMA 542CET

BW	205	CED	BW	WW	YW	MILK	M&G	SC	REA	MARB.	BMI\$	CHB\$
73	700	+5.6	2.3	63	103	31	63	1.1	.65	.13	397	130

Horned, big spread from BW to WW. He ratios 92 on BW and 105 on WW! Dark red, short marked with length of body. Dam is a top notch cow, she ratios 96.5 on BW and 106.5 on WW. Top 10% CW, 20% WW, YW, M&G, REA. 50% pigment both eyes.



9131G

BCC L1 Tama 9131G. Dam of 4183. Grandam of 486.

492 BCC DOMINO 492M

DOB: 2/17/24

Reg. # 44594857



CL 1 DOMINO 1152J

CL 1 DOMINO 9108G 1ET

CL 1 DOMINETTE 773E

HH ADVANCE 7156E ET
CL 1 DOMINETTE 9184W
HH ADVANCE 5044C ET
CL1 DOMINETTE 5101C

BCC L1 L1 DOMINETTE 502C

CL 1 DOMINO 314A

BCC L1 DOMINETTE 308A

CL 1 DOMINO 105Y
CL1 DOMINETTE 1116Y
HH ADVANCE 0184X ET
SR HARLET 960W

BW	205	CED	BW	WW	YW	MILK	M&G	SC	REA	MARB.	BMI\$	CHB\$
75	651	+7.5	1.6	55	82	34	61	1.2	.28	.20	432	110

Horned heifer bull with extra length. Look here if you keep replacements. Dam ratios 94.5 on BW and 101.8 on WW on 8 head. Top 10% MM, 20% CE, BMI, BII. 90% pigment both eyes.



492M

493 BCC DOMINO 493M

DOB: 2/17/24

Reg. # 44594858



CL 1 DOMINO 1152J

CL 1 DOMINO 9108G 1ET

CL 1 DOMINETTE 773E

HH ADVANCE 7156E ET
CL 1 DOMINETTE 9184W
HH ADVANCE 5044C ET
CL1 DOMINETTE 5101C

BW	205
84	618

BCC L1 DOMINO 708E

BCC L1 DOMINO 489B

BCC L1 L1 DOMINETTE 502C

KC L1 DOMINO 12050
BCC L1 DOMINETTE 129Y
CL 1 DOMINO 314A
BCC L1 DOMINETTE 308A

CED	BW	WW	YW	MILK	M&G	SC	REA	MARB.	BMI\$	CHB\$
+4.0	3.5	53	85	30	57	0.9	.27	.12	354	125

Horned. Lengthy with extra frame and red to the ground. 100% eye pigment.



494 BCC DOMINO 494M

DOB: 2/17/24

Reg. # 44594860



CL 1 DOMINO 2126K 1ET

CL 1 DOMINO 0186H

CL 1 DOMINETTE 5198C 1ET

HH ADVANCE 7156E ET
CL 1 DOMINETTE 6162D
GB L1 DOMINO 177R
CL1 DOMINETTE 148Y

BW	205
82	574

BCC MEDORA 184J

CL 1 DOMINO 9108G 1ET

BCC L1 DOMINETTE 566C

HH ADVANCE 7156E ET
CL 1 DOMINETTE 9184W
HH ADVANCE 2029Z ET
BCC L1 DOMINETTE 225Z

CED	BW	WW	YW	MILK	M&G	SC	REA	MARB.	BMI\$	CHB\$
-1.0	2.9	62	101	33	64	1.0	.66	-.02	455	132

Horned. Short marked and looks just like his sire, long and stretchy. Top 5% UDDR, TEAT, 10% BMI, 15% MM, M&G, REA, Top 22% MM. 100% eye pigment.



494M

495

BCC ADVANCE 495M

DOB: 2/17/24

Reg. # 44594862



H5 5019C ADVANCE 988
H5 988 ADVANCE 277
 SR 5139R MISS MONTANA 6171 ET

HH ADVANCE 5019C ET
 H5 MS 064 SOLUTION 488
 NJW 73S W18 HOMETOWN 10Y ET
 HH MISS ADVANCE 5139R ET

LSW WCC ABOUT TIME X06
BCC SWEET CAROLINE 8124F
 BCC SWEET CAROLINE 071X ET

CRR ABOUT TIME 743
 WBCC WCC 69P MS RANGELAND U800
 TFR HIGH COTTON 328 ET
 BCC KAY 415

BW	205	CED	BW	WW	YW	MILK	M&G	SC	REA	MARB.	BMI\$	CHB\$
89	644	+1.9	4.2	52	96	27	53	0.4	.68	.04	423	134

Horned. Long as a well rope, with a little more frame. Dam is a very productive cow. Ratios 96.4 on BW & 102.4 on WW on 5 head. Top 14% REA, 25% CHB. 90% eye pigment.



8124F

BCC Sweet Caroline 8124F. Dam of 495.

498

BCC L1 DIAMOND 498M ET

DOB: 2/18/24

Reg. # 44594868



CL 1 DOMINO 2126K 1ET
 CL 1 DOMINETTE 5198C 1ET

CL 1 DOMINO 0186H
 CL 1 DOMINETTE 5198C 1ET

HH ADVANCE 7156E ET
 CL 1 DOMINETTE 6162D
 GB L1 DOMINO 177R
 CL 1 DOMINETTE 148Y

BCC L1 TAMA 542CET
 CL 1 DOMINETTE 617S

CL 1 DOMINO 105Y
 CL 1 DOMINETTE 617S

CL 1 DOMINO 929W
 CL 1 DOMINETTE 9140W 1ET
 HH ADVANCE 3113N 1ET
 CL 1 DOMINETTE 4180P

BW	205	CED	BW	WW	YW	MILK	M&G	SC	REA	MARB.	BMI\$	CHB\$
89	711	+1.3	2.7	55	92	38	66	0.8	.44	.01	422	118

Straight Line 1 — 2126 x 542. Any of these full brothers will add maternal strength and give you SMOKING GOOD, milky baldies or straight Hereford replacements. Full brother to 452, 479 & 480. Top 4% MM, 15% M&G and CW, top 20% BMI. 100% eye pigment.



498M

4105

BCC DOMINO 4105M

DOB: 2/19/24

Reg. # 44594880



CL 1 DOMINO 1152J
 CL 1 DOMINETTE 773E

CL 1 DOMINO 9108G 1ET
 CL 1 DOMINETTE 773E

HH ADVANCE 7156E ET
 CL 1 DOMINETTE 9184W
 HH ADVANCE 5044C ET
 CL 1 DOMINETTE 5101C

BCC LACEY 143J ET
 BCC LACEY 048X

HH ADVANCE 8392F ET
 HH ADVANCE 5345C
 HH MISS ADVANCE 2022Z ET
 GO EXCEL L18
 BCC L1 MEDORA 757

BW	205	CED	BW	WW	YW	MILK	M&G	SC	REA	MARB.	BMI\$	CHB\$
94	621	-1.2	4.7	59	98	23	53	1.4	.34	.08	308	115

Horned. Dark red grandson of the famed Lacey 048 cow. Good testicle growth, medium frame big topped. Top 10% UDDR, 15% SC, TEAT.



048X

BCC Lacey 048X. Grandam of 4105.

4107

BCC ADVANCE 4107M

DOB: 2/19/24

Reg. # 44594884



H5 5019C ADVANCE 988
H5 988 ADVANCE 277
 SR 5139R MISS MONTANA 6171 ET

HH ADVANCE 5019C ET
 H5 MS 064 SOLUTION 488
 NJW 73S W18 HOMETOWN 10Y ET
 HH MISS ADVANCE 5139R ET

BCC MOLLY 1134J
 BCC L1 DOMINETTE 306A

CH HIGH ROLLER 756 ET
 BCC L1 DOMINETTE 306A

TFR KU ROLL THE DICE 1326
 CH MAGIE 8023
 HH ADVANCE 1173Y ET
 BCC L1 MEDORA 641

BW	205	CED	BW	WW	YW	MILK	M&G	SC	REA	MARB.	BMI\$	CHB\$
77	674	-1.8	2.5	63	110	37	69	1.2	.71	.08	446	137

Horned. Short marked, crazy long and should have a little more frame! Top 10% YW, MM, M&G, CW, REA, 20% WW, BMI, BII.



4107M

YEARLING BULLS

4114 BCC HOUSTON 4114M

DOB: 2/20/24

Reg. # P44594899



SHF DAYBREAK Y02 D287 ET
SHF HOUSTON D287 H086
 SHF MISS 14 20Z D223

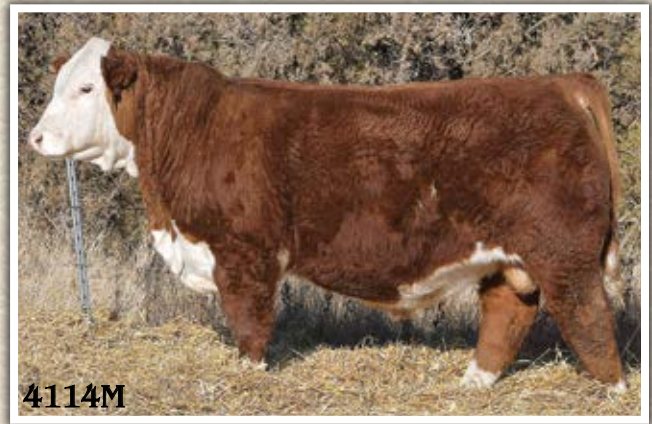
HAROLDSON'S UPGRADE T100 33D
BCC DIXE 932G
 BCC SCARLET 562C

SHF YORK 19H Y02
 SHF MISS M326 T08 ET
 LOEWEN 44X 6X 20Z
 SHF RADAR R125 T75

SHF TAHOE R117 T100
 MOHICAN MISSEY 93W
 NJW 73S W18 HOMETOWN 10Y ET
 BCC DIXIE 821U

BW	205	CED	BW	WW	YW	MILK	M&G	SC	REA	MARB.	BMI\$	CHB\$
89	714	-4.1	6.1	84	135	30	72	1.6	.98	.19	375	161

Homozygous polled. Biggest growth EPDs in the sale. Very impressive with great carcass value. Dam always produces a good one. Ratioed 108 on WW, YW, CW, REA, 2% M&G, 5% CHB, 10% SC, 15% TEAT. 80% pigment right eye.



4114M

4115 BCC HOUSTON 4115M

DOB: 2/20/24

Reg. # P44594903



SHF DAYBREAK Y02 D287 ET
SHF HOUSTON D287 H086
 SHF MISS 14 20Z D223

HAROLDSON'S UPGRADE T100 33D
BCC HOLLY 0124H
 BCC L1 TAMA 565C ET

SHF YORK 19H Y02
 SHF MISS M326 T08 ET
 LOEWEN 44X 6X 20Z
 SHF RADAR R125 T75

SHF TAHOE R117 T100
 MOHICAN MISSEY 93W
 CL 1 DOMINO 105Y
 CL 1 DOMINETTE 617S

BW	205	CED	BW	WW	YW	MILK	M&G	SC	REA	MARB.	BMI\$	CHB\$
86	681	-2.1	4.1	70	115	29	65	0.9	.78	.18	379	158

Polled. Dark cherry red with more frame and length. Look for him to add growth. Ratioed 103 on WW. Top 5% WW, YW, 10% REA, CHB, 15% M&G. 100% eye pigment.



0124H

BCC Holly 0124H. Dam of 4115.

4116 BCC DOMINO 4116M

DOB: 2/20/24

Reg. # 44594905



CL 1 DOMINO 9108G 1ET
CL 1 DOMINO 1152J
 CL 1 DOMINETTE 773E

BCC DEMAND 765E
BCC MEDORA 0146H
 BCC BETSY 745E

HH ADVANCE 7156E ET
 CL 1 DOMINETTE 9184W
 HH ADVANCE 5044C ET
 CL1 DOMINETTE 5101C

BCC L1 DOMINO 489B
 BCC L1 TAMA 5105C ET
 CL1 DOMINO 5110C
 BCC BETSY 948W

BW	205	CED	BW	WW	YW	MILK	M&G	SC	REA	MARB.	BMI\$	CHB\$
86	667	-1.7	4.0	61	95	31	61	0.9	.35	.04	347	114

Horned. Traditionally marked stylish and correct. Should add milk and growth. Top 8% UDDR, 25% MM, M&G. 100% eye pigment.



4117 BCC DOMINO 4117

DOB: 2/20/24

Reg. # 44595811



CL 1 DOMINO 9108G 1ET
CL 1 DOMINO 1152J
 CL 1 DOMINETTE 773E

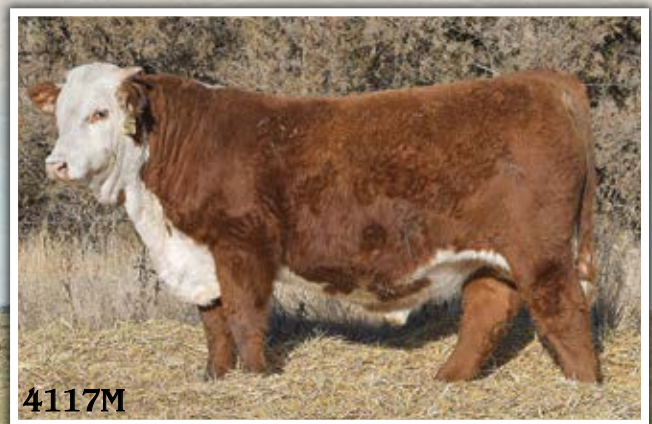
UPS DOMINO 3027
BCC DOMINETTE 6104D ET
 CL 1 DOMINETTE 617S

HH ADVANCE 7156E ET
 CL 1 DOMINETTE 9184W
 HH ADVANCE 5044C ET
 CL1 DOMINETTE 5101C

CL 1 DOMINO 9126J 1ET
 UPS MISS DIAMOND 1353
 HH ADVANCE 3113N 1ET
 CL 1 DOMINETTE 4180P

BW	205	CED	BW	WW	YW	MILK	M&G	SC	REA	MARB.	BMI\$	CHB\$
87	669	+1.2	5.1	71	117	32	68	1.3	.24	-.07	429	101

Horned. Soggy, dense and will add a ton of performance and length. Daughters should be phenomenal. Top 5% WW, YW, 10% M&G, UDDR, 15% MM, TEAT, 20% SC, BMI, BII. 100% eye pigment.



4117M

YEARLING BULLS

4121

BCC ADVANCE 4121M

DOB: 2/21/24

Reg. # 44594913



H5 988 ADVANCE 277

H5 5019C ADVANCE 988

SR 5139R MISS MONTANA 6171 ET

HH ADVANCE 5019C ET
H5 MS 064 SOLUTION 488
NJW 73S W18 HOMETOWN 10Y ET
HH MISS ADVANCE 5139R ET

BCC BOBBI 167J

SR SUSTAIN 808F

BCC BOBBI 216Z

CHURCHILL SENSATION 028X
SR SCOPIA 691D
ECR L18 EXTRA DEEP 9279
BCC L1 PRINCESS 560

BW	205	CED	BW	WW	YW	MILK	M&G	SC	REA	MARB.	BMI\$	CHB\$
87	715	+1.1	4.0	69	118	35	70	1.0	.80	.28	478	155

Horned. This guy is a dude. Check out his extra length and big 205 day weight. His carcass #'s show great value. Top 5% WW, YW, M&G, REA, BII, 10% MM, BMI, CHB, 15% MARB. 100% eye pigment.



4121M

4122

BCC DOMINO 4122M

DOB: 2/21/24

Reg. # 44594914



CL 1 DOMINO 1152J

CL 1 DOMINO 9108G 1ET

CL 1 DOMINETTE 773E

HH ADVANCE 7156E ET
CL 1 DOMINETTE 9184W
HH ADVANCE 5044C ET
CL1 DOMINETTE 5101C

BCC MEDORA 163J

BCC DOMINATOR 829F

BCC JEWEL 781E

BCC DOMINATOR 619D
BCC DAFNEE 644D
CL1 DOMINO 5110C
BCC JEWEL 411B

BW	205	CED	BW	WW	YW	MILK	M&G	SC	REA	MARB.	BMI\$	CHB\$
88	711	-1.6	4.3	68	109	31	65	1.0	.59	.14	439	135

Horned. Performance oriented and maternal driven. Exceptional frame and length and great cow family. Ratioed 107 on WW. Top 10% WW, YW, CW, 15% M&G, BMI, BII, 21% CHB. 100% eye pigment.



993G

BCC Sweet Caroline 993G. Dam of 4124.

4124

BCC HODGE 4124M

DOB: 2/21/24

Reg. # P44594915



SHF HODGEMAN F158 H244

SHF FORESIGHT B413 F158

SHF MAGGIE 001A E109

EFBEEF BR VALIDATED B413
SHF GERBER R117 Y200
GERBER ANODYNE 001A
SHF MAGGIE M326 X05 ET

BCC SWEET CAROLINE 993G

BCC DOMINATOR 619D

BCC SWEET CAROLINE 071X ET

CL 1 DOMINO 215Z
BCC MISS BELL 206Z
TFR HIGH COTTON 328 ET
BCC KAY 415

BW	205	CED	BW	WW	YW	MILK	M&G	SC	REA	MARB.	BMI\$	CHB\$
82	600	-0.7	2.2	53	98	25	51	0.6	.76	.36	494	153

Polled. Dense, soggy and thick from end to end! Carcass value is great. Top 10% REA, MARB, BMI, BII, CHB. 100% eye pigment.



4124M

YEARLING BULLS



4125

BCC NOTH STAR 4125M

DOB: 2/21/24

Reg. # P44594916



SHF HOUSTON D287 H086

SHF DAYBREAK Y02 D287 ET

SHF MISS 14 20Z D223

SHF YORK 19H Y02
SHF MISS M326 T08 ET
LOEWEN 44X 6X 20Z
SHF RADAR R125 T75

BCC PHILLIS 130J

JDH AH PROMINENT 21G ET

BCC DOMINETTE 9146G

JDH 11B STUD 3134 63E
JDH AH MS 34X VICTOR 33Z45C ET
HAROLDSON'S UPGRADE T100 33D
BCC L1 DOMINETTE 308A

BW	205	CED	BW	WW	YW	MILK	M&G	SC	REA	MARB.	BMI\$	CHB\$
86	793	+3.9	3.2	77	118	29	67	1.4	1.08	.29	504	159

HOMOZYGOUS POLLED. The best polled bull ever RAISED at the ranch. Big middled, wide ended, balances great and moves out great on his feet and legs. We flushed his mother at 3 years old which we've never done and testifies to how good a cow he has behind him. She is incredible. She ratios 119 on WW. This bull and his mother will both see heavy use in years to come. 4125 ratios 120 on WW. Growth/carcass EPD profile is what we're all looking for. Keeping half possession and 50% semen interest. Will work with buyer on possession. Top 1% WW, REA, 3% YW, CW, BMI, BII, 6% CHB, 10% M&G, UDDR, 13% SC, MARB. 100% eye pigment.



130J

BCC Phillis 130J. Dam of 4125.

YEARLING BULLS

4128

BCC DOMINO 4128M

DOB: 2/21/24

Reg. # 44594919



CL 1 DOMINO 2126K 1ET

CL 1 DOMINO 0186H

HH ADVANCE 7156E ET
CL 1 DOMINETTE 6162D
GB L1 DOMINO 177R
CL1 DOMINETTE 148Y

BCC DOMINETTE 848F

BCC DOMINATOR 619D

CL 1 DOMINO 215Z
BCC MISS BELL 206Z
UPS DOMINO 3027
CL 1 DOMINETTE 617S

BW	205	CED	BW	WW	YW	MILK	M&G	SC	REA	MARB.	BMI\$	CHB\$
75	676	-1.5	4.1	74	123	36	73	1.9	.54	.19	473	154

Horned. Twin to 4129. These twins are out of a beautiful 619 daughter. They're moderate, robust, thick and will leave you with incredible udders. Top 2% WW, YW, SC, MG, CW, TEAT, BII, 10% MM, UDDR, BMI, CHB. 90% pigment right eye, 100% left eye.



848F

BCC Dominette 848F. Dam of 4128 and 4129.

4129

BCC DOMINO 4129M

DOB: 2/21/24

Reg. # 44594920



CL 1 DOMINO 2126K 1ET

CL 1 DOMINO 0186H

HH ADVANCE 7156E ET
CL 1 DOMINETTE 6162D
GB L1 DOMINO 177R
CL1 DOMINETTE 148Y

BCC DOMINETTE 848F

BCC DOMINATOR 619D

CL 1 DOMINO 215Z
BCC MISS BELL 206Z
UPS DOMINO 3027
CL 1 DOMINETTE 617S

BW	205	CED	BW	WW	YW	MILK	M&G	SC	REA	MARB.	BMI\$	CHB\$
71	593	+2.3	2.7	65	106	35	67	1.7	.50	.27	534	142

Horned. Twin to 4128. These twins are out of a beautiful 619 daughter. They're moderate, robust, thick and will leave you with incredible udders. Top 5% SC, TEAT, BMI, BII, 10% MM, M&G, UDDR, 15% WW, YW, CW, MARB, CHB. 100% eye pigment.



4129M

4130

BCC ADVANCE 4130M

DOB: 2/21/24

Reg. # 44594921



H5 988 ADVANCE 277

H5 5019C ADVANCE 988

HH ADVANCE 5019C ET
H5 MS 064 SOLUTION 488
NJW 73S W18 HOMETOWN 10Y ET
HH MISS ADVANCE 5139R ET

SR 5139R MISS MONTANA 6171 ET

BCC LUCY 835F ET

GKB 88X LARAMIE B293

NJW 98S R117 RIBEYE 88X ET
GKB S&S GOLD APRIL B928 ET
CL 1 DOMINO 105Y
CL 1 DOMINETTE 7136T 1ET

CL 1 DOMINETTE 352A 1ET

BW	205	CED	BW	WW	YW	MILK	M&G	SC	REA	MARB.	BMI\$	CHB\$
57	621	+6.8	0.7	56	90	33	61	0.8	.46	.21	387	113

Horned. Moderate framed, burly, dark red twin. Could be used on heifers or cows. Will add milk to your cowherd. He is a twin. Top 13% MM. 100% eye pigment.



4130M

YEARLING BULLS



4134M

4134

BCC TOREX 4134M

DOB: 2/23/24

Reg. # 44594925



ECR 628 ADVANCE 8014

H FHF ADVANCE 628 ET

HH ADVANCE 4075B ET

FHF 408 RITA 21W

HH ADVANCE 0132X

ECR 0132 DOMINETTE 3374

ECR 7195 DOMINETTE 9143

BCC HAZEL 278K

CRR 109 ON POINT 559 ET

CRR 719 CATAPULT 109

CRR 435 KELLY 161

BCC HAZEL 8181F

HAROLDSON'S UPGRADE T100 33D

BCC SCARLET 338A

BW	205	CED	BW	WW	YW	MILK	M&G	SC	REA	MARB.	BMI\$	CHB\$
74	735	+3.9	3.2	69	105	30	64	0.7	.76	.09	356	132

Horned. Phenotypically awesome, structurally awesome, dam also awesome. Ratioed 98 on BW and 111 on WW. Will retain 1/4 in herd semen use. Top 5% WW, 10% CW, REA, 15% YW, M&G, 25% CHB. Goggle eyed.



4135

BCC ADVANCE 4135M

DOB: 2/23/24

Reg. # 44595772



BCC DOMINATOR 1124J

BCC DOMINATOR 829F

BCC DOMINATOR 619D

BCC DAFNEE 644D

CL1 DOMINO 5110C

BCC L1 DOMINO 7160E

BCC L1 DOMINETTE 225Z

BW	205
70	668

BCC SHIRLEY 206K

SR SUSTAIN 808F

CHURCHILL SENSATION 028X

SR SCOPIA 691D

BCC MISS DEMAND 047H

ECR 628 ADVANCE 8014

BCC TRUE MAYBARRYY 866F ET

CED	BW	WW	YW	MILK	M&G	SC	REA	MARB.	BMI\$	CHB\$
+8.5	-0.5	54	77	32	59	0.6	.46	.17	391	113

Horned heifer bull. Ratioed 92 on BW. Traditionally marked, his steer calves will be packed full of muscle and pleasing to the eye. Top 5% BW, 15% CE, 20% MM. 90% pigment right eye, 100% left eye.

4139

BCC L1 DIAMOND 4139M

DOB: 2/24/24

Reg. # 44594930



CL 1 DOMINO 2126K 1ET

CL 1 DOMINO 0186H

HH ADVANCE 7156E ET

CL 1 DOMINETTE 6162D

GB L1 DOMINO 177R

CL1 DOMINETTE 148Y

BW	205
79	622

BCC L1 MEDORA 179J ET

CL 1 DOMINO 9108G 1ET

HH ADVANCE 7156E ET

CL 1 DOMINETTE 9184W

BCC L1 TAMA 580C ET

CL 1 DOMINO 105Y

CL 1 DOMINETTE 617S

CED	BW	WW	YW	MILK	M&G	SC	REA	MARB.	BMI\$	CHB\$
+5.9	2.4	60	97	33	63	0.7	.64	.14	454	147

Straight L1. Traditionally marked, moderate framed. His daughters will be low maintenance with tight udders and the kind that will thrive in the big country. Top 5% UDDR, TEAT, 10% BMI, CHB, 11% BII, 20% MM. 100% eye pigment.



4140M



BCC CHATTAHOOCHEE 4140M

DOB: 2/24/24

Reg. # P44594931



BCC CHATTAHOOCHEE 2103K

SHF FORESIGHT B413 F158
BCC LUCY 835F ET

EFBEEF BR VALIDATED B413
SHF GERBER R117 Y200
GKB 88X LARAMIE B293
CL 1 DOMINETTE 352A 1ET

BCC DARLA 576C

NJW 78P TWENTYTWELVE 190Z ET
BCC DARLA 202Z

NJW 73S M326 TRUST 100W ET
NJW BW LADYSPORT DEW 78P ET
THM DURANGO 4037
BCC MARIA 836

BW	205	CED	BW	WW	YW	MILK	M&G	SC	REA	MARB.	BMI\$	CHB\$
89	671	-1.4	4.4	61	105	19	49	0.9	.58	.11	375	121

Polled. WOW take a look this stud! He has tons of rib shape, muscle shape and power. His mother is the front pasture kind. Top 10% WW, MM, TEAT, BII. 100% pigment right eye, 75% left eye.



576C

BCC Darla 576C. Dam of 4140.



BCC DOMINO 4141M

DOB: 2/24/24

Reg. # 44594932



CL 1 DOMINO 1152J

CL 1 DOMINO 9108G 1ET
CL 1 DOMINETTE 773E

HH ADVANCE 7156E ET
CL 1 DOMINETTE 9184W
HH ADVANCE 5044C ET
CL1 DOMINETTE 5101C

BCC MEDORA 1172J

HH ADVANCE 8392F ET
BCC BABY CHEEKS 292Z

HH ADVANCE 5345C
HH MISS ADVANCE 2022Z ET
HH ADVANCE 0184X ET
BCC HARITTE 876U ET

BW	205	CED	BW	WW	YW	MILK	M&G	SC	REA	MARB.	BMI\$	CHB\$
76	689	+5.9	3.1	60	93	29	59	0.8	.51	.22	389	142

Horned. He's got length and volume, darker colored and short marked with good calving ease, carcass merit and udder quality. Top 1% UDDR, 5% TEAT, 10% CW, CHB. 100% eye pigment.

YEARLING BULLS

4144

BCC ASTRO 4144M

DOB: 2/25/24

Reg. # P44594938



BCC SUNRISE 243K ET

SHF DAYBREAK Y02 D287 ET

SHF TIME 001A D81

SHF YORK 19H Y02
SHF MISS M326 T08 ET
GERBER ANODYNE 001A
SHF TIME 42X A140

BCC TAMA 1175J

HAROLDSON'S UPGRADE T100 33D

BCC TAMA 8107F

SHF TAHOE R117 T100
MOHICAN MISSEY 93W
LSW WCC ABOUT TIME X06
CL 1 DOMINETTE 617S

BW	205	CED	BW	WW	YW	MILK	M&G	SC	REA	MARB.	BMI\$	CHB\$
76	695	+5.7	1.1	58	94	27	56	1.3	.42	.21	385	122

Homozygous polled heifer bull. Keep every daughter out of this bull. He is moderate and the right kind. Ratioed 96 on BW & 105 on WW. Top 8% UDDR, 15% TEAT, 20% BW, SC. Goggle eyed.



4144M



1175J

BCC Tama 1175J. Dam of 4144.

4149

BCC ROSEVELT 4149M

DOB: 2/28/24

Reg. # P44594949



H5 5019C ADVANCE 988
H5 988 ADVANCE 277

SR 5139R MISS MONTANA 6171 ET

GERBER ANODYNE 001A

SHF TIME 001A D81

SHF TIME 42X A140

HH ADVANCE 5019C ET
H5 MS 064 SOLUTION 488
NJW 73S W18 HOMETOWN 10Y ET
HH MISS ADVANCE 5139R ET

KCF BENNETT 9126J R294
GERBER 627S HOLLY 096Y
K&B SENTINEL 0042X
KJ 796P TIMEWISE 006W ET

BW	205
72	604

CED	BW	WW	YW	MILK	M&G	SC	REA	MARB.	BMI\$	CHB\$
+9.4	-0.4	64	107	32	64	1.1	.49	.26	410	143

Polled heifer bull out of the great D81 cow. He's moderate with plenty of volume and should raise high quality replacement and feeders alike. Good carcass merit. Top 10% CE, BW, UDDR, CHB, 15% YW, M&G, TEAT, MARB, 20% WW, MM, BII. Goggle eyed.

4150

BCC DIVERGENT 4150M

DOB: 2/29/24

Reg. # P44594950



CRR 824 DIVERGENT 170

CSC 502 6209 GOLD CREEK 824

CRR 028X JULIANNA 608

BW	205
68	576

BCC SCARLET 681D

BCC MISS MAY BARRY 0116X

KT GOLD CREEK 6209
CSC 10Y LADY DEW 502 ET
CHURCHILL SENSATION 028X
CRR 719T JULIANNE 482 ET

NJW 73S W18 HOMETOWN 10Y ET
SHF WONDER M326 W18 ET
NJW P606 72N DAYDREAM 73S
TFR HIGH COTTON 328 ET
BCC L1 MEDORA 734

CED	BW	WW	YW	MILK	M&G	SC	REA	MARB.	BMI\$	CHB\$
+12.4	-0.2	39	70	27	46	1.3	.39	.32	430	137

Scurred sure shot heifer bull that will add great carcass value. Ratioed 81 on BW. Top 3% CE, 10% BW, MARB, 15% SC, BMI, 20% BII, CHB. 100% pigment right eye.

4152

BCC DOMINO 4152M

DOB: 2/29/24

Reg. # 44594953



CL 1 DOMINO 2126K 1ET

CL 1 DOMINO 0186H

CL 1 DOMINETTE 5198C 1ET

CL 1 DOMINO 9108G 1ET

BCC DODIE 9106G

HH ADVANCE 7156E ET
CL 1 DOMINETTE 6162D
GB L1 DOMINO 177R
CL1 DOMINETTE 148Y

HH ADVANCE 7156E ET
CL 1 DOMINETTE 9184W
BCC DOMINATOR 619D
BCC BOBBI 220Z

BW	205
77	646

BCC MEDORA 112J

CED	BW	WW	YW	MILK	M&G	SC	REA	MARB.	BMI\$	CHB\$
+1.9	2.4	55	86	23	50	1.2	.50	.22	391	136

Horned. Red to the ground. Goes back to 619. Good choice if you like smaller framed, low maintenance kind. Good CHB. Top 8% UDDR, 10% CW, CHB, 15% TEAT, 100% eye pigment.

4154

BCC DOMINO 4154M

DOB: 3/1/24

Reg. # 44594957



CL 1 DOMINO 917G

HH ADVANCE 7156E ET

CL 1 DOMINETTE 7111E

SR SUSTAIN 808F

BCC SHIRLEY 0404H ET

HH MISS ADVANCE 3116A ET

HH ADVANCE 3297A ET
HH MISS ADVANCE 1056Y ET
HH ADVANCE 5047C ET
CL1 DOMINETTE 4136B

CHURCHILL SENSATION 028X
SR SCOPIA 691D
HH ADVANCE 8050U ET
L1 DOMINETTE 99374

BW	205
71	636

CED	BW	WW	YW	MILK	M&G	SC	REA	MARB.	BMI\$	CHB\$
+13.8	-1.2	54	81	34	61	1.6	.31	.14	515	107

Horned sleep all night heifer bull. The Sustain daughters have been real good. Add that to 917 and you will really have something. Top 5% CE, BW, TEAT, BMI, BII, 10% SC, MM, UDDR. 50% pigment left eye.



4156M



BCC ROSEVELT 4156M ET

DOB: 3/1/24

Reg. # P44594959



SHF HODGEMAN F158 H244

SHF FORESIGHT B413 F158
SHF MAGGIE 001A E109

EFBEEF BR VALIDATED B413
SHF GERBER R117 Y200
GERBER ANODYNE 001A
SHF MAGGIE M326 X05 ET

BW	205
71	652

SHF TIME 001A D81

GERBER ANODYNE 001A
SHF TIME 42X A140

KCF BENNETT 9126J R294
GERBER 627S HOLLY 096Y
K&B SENTINEL 0042X
KJ 796P TIMEWISE 006W ET

CED	BW	WW	YW	MILK	M&G	SC	REA	MARB.	BMI\$	CHB\$
+9.6	-0.4	62	106	27	58	0.7	.56	.43	431	167

Homozygous Polled. Check out this EPD profile. This bull will be very versatile for top notch replacements and added profit on the rail. He is thick and easy doing. Could be used on heifers. Top 1% UDDR & TEAT, 2% CHB, 3% CW, MARB, 10% CE, BW, BII, 25% WW, YW, BMI. 100% pigment left eye.



BCC ACCOMPLISHMENT 4160M

DOB: 3/4/24

Reg. # P44594966



CSC 913 ACCOMPLICE 208

CSC 701 BOLDER 901
CSC 1211 JEWEL 913

TH 22R 16S LAMBEAU 17Y
CSC 502 LADY DEW 701
CHURCHILL JR FRONTLINE 6200D
MC 4037 JEWEL 1211

BW	205
88	652

BCC ELLIE 992G ET

KCF BENNETT ENCORE Z311 ET
BCC MISS MAYBARRY 064X

SCHU-LAR ON TARGET 22S
KCF MISS REVOLUTION X338 ET
TFR HIGH COTTON 328 ET
BCC L1 MEDORA 744

CED	BW	WW	YW	MILK	M&G	SC	REA	MARB.	BMI\$	CHB\$
+2.9	2.0	59	102	33	63	1.5	.38	.19	497	123

Scurred. Solid EPD profile. Typical 208 son, soggy, easy doing thick ended. Stems back to the Maybarry cow. Top 5% BMI, BII, 10% SC, MM, 20% YW, M&G.



BCC DIAMOND 4161M ET

DOB: 3/5/24

Reg. # 44594967



CL 1 DOMINO 2126K 1ET

CL 1 DOMINO 0186H
CL1 DOMINETTE 5198C 1ET

HH ADVANCE 7156E ET
CL 1 DOMINETTE 6162D
GB L1 DOMINO 177R
CL1 DOMINETTE 148Y

BCC L1 DOMINETTE 454B

HH ADVANCE 1173Y ET
BCC BABY CHEEKS 2115Z

HH ADVANCE 7034T ET
HH MISS ADVANCE 5139R ET
HH ADVANCE 0184X ET
BCC SUGAR BABY 583

BW	205	CED	BW	WW	YW	MILK	M&G	SC	REA	MARB.	BMI\$	CHB\$
85	615	+5.2	1.4	56	88	27	55	1.7	.22	.11	458	113

Horned 454 son. Match that with 2126 and his daughters will be top producers with amazing tight udders. Short marked and big testicle development. Top 5% UDDR, TEAT, 10% SC, BMI, BII, 20% BW. 100% eye pigment. Retaining 1/4 semen interest.



4161M

YEARLING BULLS

4179

BCC ACCOMPLISHMENT 4179M

DOB: 3/8/24

Reg. # P44595577



CSC 913 ACCOMPLICE 208

CSC 701 BOLDER 901

CSC 1211 JEWEL 913

TH 22R 16S LAMBEAU 17Y
CSC 502 LADY DEW 701
CHURCHILL JR FRONTLINE 6200D
MC 4037 JEWEL 1211

BCC JENNY 809F

NJW 84B 10W JOURNEY 53D

BCC DAFNEE 650D

LJR 023R WHITMORE 10W
NJW 16S 100W JOEY 84B ET
BCC L1 DOMINO 489B
BCC BOBBI 220Z

BW	205	CED	BW	WW	YW	MILK	M&G	SC	REA	MARB.	BMI\$	CHB\$
68	561	+12.1	-1.9	45	71	37	60	1.3	.52	-.01	478	92

Homozygous polled heifer bull. Moderate, easy doing and soggy. Ratioed 82 on BW. Top 5% CE, BW, MM, TEAT, 10% BMI, BII. Goggle eyed.



4179M

4180

BCC ADVANCE 4180M

DOB: 3/8/24

Reg. # P44595578



ECR 628 ADVANCE 801A

H FHF ADVANCE 628 ET

ECR 0132 DOMINETTE 3374

HH ADVANCE 4075B ET
FHF 408 RITA 21W
HH ADVANCE 0132X
ECR 7195 DOMINETTE 9143

BCC BILLE JEAN 250K

SHF HARVEST D287 H033 ET

BCC BILLIE JEAN 727E

SHF DAYBREAK Y02 D287 ET
SHF TIME 001A D81
BCC BILLY THE KID 330A
BCC L1 DOMINETTE 351A

BW	205	CED	BW	WW	YW	MILK	M&G	SC	REA	MARB.	BMI\$	CHB\$
72	649	+9.6	0.8	54	84	18	45	1.2	.64	.09	381	124

Scurred. Ton of shape and muscle in a moderat package. Heifer bull. Ratioed 95 on BW. Top 10% CE, UDDR, 15% BW, TEAT, CW, 20% REA. Goggle eyed.



4180M

4181

BCC ACCOMPLISHMENT 4181M

DOB: 3/9/24

Reg. # P44595579



CSC 913 ACCOMPLICE 208

CSC 701 BOLDER 901

CSC 1211 JEWEL 913

TH 22R 16S LAMBEAU 17Y
CSC 502 LADY DEW 701
CHURCHILL JR FRONTLINE 6200D
MC 4037 JEWEL 1211

BW	205
87	690

BCC HAZEL 1104J

HAROLDSON'S UPGRADE T100 33D

BCC DARLA 6163D

SHF TAHOE R117 T100
MOHICAN MISSEY 93W
KF BLUE CHIP 7Z
BCC DARLA 202Z

CED	BW	WW	YW	MILK	M&G	SC	REA	MARB.	BMI\$	CHB\$
-4.4	4.6	68	108	39	73	1.2	.57	.06	446	110

Scurred, stout featured, sound structured, good haired yet presents style. Top 2% MM, M&G, 10% WW, YW, 15% BMI, BII.



4181M

YEARLING BULLS

4182

BCC ACCOMPLISHMENT 4182M

DOB: 3/10/24

Reg. # P44595580



CSC 913 ACCOMPLICE 208
CSC 701 BOLDER 901
CSC 1211 JEWEL 913

TH 22R 16S LAMBEAU 17Y
CSC 502 LADY DEW 701
CHURCHILL JR FRONTLINE 6200D
MC 4037 JEWEL 1211

BCC DARLA 1151J

HAROLDSON'S UPGRADE T100 33D
BCC SWEET CAROLINE 8124F

SHF TAHOE R117 T100
MOHICAN MISSEY 93W
LSW WCC ABOUT TIME X06
BCC SWEET CAROLINE 071X ET

BW	205	CED	BW	WW	YW	MILK	M&G	SC	REA	MARB.	BMI\$	CHB\$
83	620	-1.2	3.3	57	95	32	60	0.7	.57	.02	457	110

Polled. What a classy individual. Dark red, great structure and out of a beautiful uddered Upgrade daughter. 90% pigment right eye, 100% left eye.



4182M

4183

BCC L1 DIAMOND 4183M

DOB: 3/10/24

Reg. # 44595581



CL 1 DOMINO 1152J

CL 1 DOMINO 9108G 1ET
CL 1 DOMINETTE 773E

HH ADVANCE 7156E ET
CL 1 DOMINETTE 9184W
HH ADVANCE 5044C ET
CL1 DOMINETTE 5101C

BW	205
90	695

BCC L1 TAMA 9131G

CL1 DOMINO 5110C
BCC L1 TAMA 542CET

CL 1 DOMINO 3100A 1ET
CL 1 DOMINETTE 055X
CL 1 DOMINO 105Y
CL 1 DOMINETTE 617S

CED	BW	WW	YW	MILK	M&G	SC	REA	MARB.	BMI\$	CHB\$
-4.0	5.2	59	89	36	66	0.5	.24	-.10	352	83

Straight L1. Man this guy is burly and robust. Ratioed 105 on WW! His dam is one of our best and is one hard working cow that still looks good at weaning time. Ask us to see a picture of her udder when she calved. She ratios 110 on WW on 4 head. Top 4% MM, 10% M&G. 100% eye pigment.

4199

BCC ACCOMPLISHMENT 4199M

DOB: 3/14/24

Reg. # P44595595



CSC 913 ACCOMPLICE 208

CSC 701 BOLDER 901
CSC 1211 JEWEL 913

TH 22R 16S LAMBEAU 17Y
CSC 502 LADY DEW 701
CHURCHILL JR FRONTLINE 6200D
MC 4037 JEWEL 1211

BW	205
82	650

BCC SHAKIRA 018H

AH JDH MUNSON 15E ET
BCC BABE 8187F

JDH VICTOR 719T 33Z ET
AH JDH MS 25L WRANGLER 34X ET
BCC L1 DOMINO 626D ET
BCC BABE 632D

CED	BW	WW	YW	MILK	M&G	SC	REA	MARB.	BMI\$	CHB\$
+5.3	0.9	59	98	39	68	0.3	.60	.27	577	141

Homozygous Polled heifer or cow bull. Baldy maker! Soggy, classy and out of a very productive cow family. Top 1% BMI, BII, 5% MM, TEAT, 10% UDDR, 20% BW, CW, MARB, CHB. 80% pigment right eye.

4204

BCC DOMINO 4204M

DOB: 3/18/24

Reg. # 44595609



CL 1 DOMINO 917G

HH ADVANCE 7156E ET
CL 1 DOMINETTE 7111E

HH ADVANCE 3297A ET
HH MISS ADVANCE 1056Y ET
HH ADVANCE 5047C ET
CL1 DOMINETTE 4136B

BCC DODIE 9106G

BCC DOMINATOR 619D
BCC BOBBI 220Z

CL 1 DOMINO 215Z
BCC MISS BELL 206Z
ECR L18 EXTRA DEEP 9279
BCC CHAR 427 ET

BW	205	CED	BW	WW	YW	MILK	M&G	SC	REA	MARB.	BMI\$	CHB\$
80	668	+5.8	1.7	58	92	26	55	1.8	.37	.14	386	127

Horned. We call him 'Thicky' because that's what he is. Dam is a gorgeous 619 daughter. Youngest bull in the sale but fits right in! Top 2% SC, 20% CW, 25% BW. 80% pigment right eye, 100% left eye.



4204M

YEARLING BULLS



KCC ADVANCE 4M

DOB: 2/18/24

Reg. # 44596429



H5 988 ADVANCE 277

H5 5019C ADVANCE 988

SR 5139R MISS MONTANA 6171 ET

HH ADVANCE 5019C ET
H5 MS 064 SOLUTION 488
NJW 73S W18 HOMETOWN 10Y ET
HH MISS ADVANCE 5139R ET

BCC LEXI 048H

EXR BANKROLL 8130 ET

BCC SCARLET 562C

BR BELLE AIR 6011
EXR LEXUS 4208 ET
NJW 73S W18 HOMETOWN 10Y ET
BCC DIXIE 821U

BW	205	CED	BW	WW	YW	MILK	M&G	SC	REA	MARB.	BMI\$	CHB\$
88	743	+2.1	3.0	67	114	22	55	1.6	.59	.14	438	132

Horned bull with a ton of depth, muscle, power and performance numbers. Backed by a great cow family. Top 5% YW, Top 6% SC, REA, Top 8% UDDR, Top 10% WW, Top 20% BMI, BII, CHB. 100% pigment right eye.



4M



KCC SUNRISE 5M

DOB: 3/1/24

Reg. # P44604036



BCC SUNRISE 243K ET

SHF DAYBREAK Y02 D287 ET

SHF TIME 001A D81

SHF YORK 19H Y02
SHF MISS M326 T08 ET
GERBER ANODYNE 001A
SHF TIME 42X A140

KCC MS GLORIA 1J

WHITEHAWK WARRIOR 845C ET

KCC MS GLORIA 7G

UPH PROSPECTOR P152
GRANDVIEW CMR 4003 BETH Y115ET
CRR 109 CATAPULT 322
KCC MS GLORY 1D

BW	205	CED	BW	WW	YW	MILK	M&G	SC	REA	MARB.	BMI\$	CHB\$
81	795	+4.0	2.0	66	105	28	60	1.1	.25	.25	463	117

Scurred, safe to use on heifers. Combines calving ease with great performance. Great spread from birth to weaning. Top 4% WW, Top 6% MG, Top 10% YW, UDDR, REA, Top 15% MM, TEAT, CHB, Top 20% BII. Goggle eyed.



5M



KCC DIVERGENT 7M

DOB: 3/10/24

Reg. # P44608156



CRR 824 DIVERGENT 170

CSC 502 6209 GOLD CREEK 824

CRR 028X JULIANNA 608

KT GOLD CREEK 6209
CSC 10Y LADY DEW 502 ET
CHURCHILL SENSATION 028X
CRR 719T JULIANNE 482 ET

KCC MS BETTY 19G

WORR RIBEYE 79C4 ET

BAR JZ SABRINA 656Z

NJW 98S R117 RIBEYE 88X ET
ROSE MARIE 2Y79 ET
MCCOY 55M ABSOLUTE 49S
BAR JZ KYLIE JO 843U

BW	205	CED	BW	WW	YW	MILK	M&G	SC	REA	MARB.	BMI\$	CHB\$
85	658	+6.6	2.1	52	86	25	52	1.1	.40	.07	376	100

Polled. Backed by a great producing cow family. Dam has a beautiful udder! Should make nice replacements. 90% pigment right eye.



KCC HARVEST 11M ET

DOB: 3/15/24

Reg. # P44608146



SHF HARVEST D287 H033 ET

SHF DAYBREAK Y02 D287 ET

SHF TIME 001A D81

SHF YORK 19H Y02
SHF MISS M326 T08 ET
GERBER ANODYNE 001A
SHF TIME 42X A140

BCC MISS ADVANCE 554C

HH ADVANCE 0184X ET

BCC SCARLET 368A

HH ADVANCE 8203U ET
HH MISS ADVANCE 1028L
NJW 73S W18 HOMETOWN 10Y ET
BCC VENUS 9116W

BW	205	CED	BW	WW	YW	MILK	M&G	SC	REA	MARB.	BMI\$	CHB\$
83	694	+6.1	2.0	64	102	33	65	1.5	.53	.19	389	130

Polled. Moderate with lots of depth and a great EPD profile. Backed by a proven pedigree. Top 10% CHB, Top 15% YW, MM, MG, REA, Top 17% WW. 90% pigment right eye.



11M

18 MONTH OLD BULLS



3402 L

3402

BCC DOMINO 3402 L

DOB: 8/14/23

Reg. # 44507256



CL 1 DOMINO 917G

HH ADVANCE 7156E ET

CL 1 DOMINETTE 7111E

HH ADVANCE 8392F ET

BCC L1 DOMINETTE 382A

HH ADVANCE 3297A ET
HH MISS ADVANCE 1056Y ET
HH ADVANCE 5047C ET
CL1 DOMINETTE 4136B

HH ADVANCE 5345C
HH MISS ADVANCE 2022Z ET
HH ADVANCE 1173Y ET
BCC L1 MEDORA 714

BW	205
76	713

BCC MEDORA 1310J

CED	BW	WW	YW	MILK	M&G	SC	REA	MARB.	BMI\$	CHB\$
+4.5	4.0	61	96	23	54	1.5	.52	.07	334	120

Horned herd bull. Phenotypically this beast is darn nice. Big testicles, square made dam has a picture perfect udder. Ratioed 107 on WW. These 917s have been great cattle! Top 9% SC, 100% pigment right eye, 85% left eye.

3407

BCC BILLY BOY 3407L ET

DOB: 8/19/23

Reg. # 44507260



BCC BILLY THE KID 330A

NJW 73S W18 HOMETOWN 10Y ET

BCC SWEET CAROLINE 071X ET

BW	205
86	754

CL 1 DOMINETTE 617S

HH ADVANCE 3113N 1ET

CL 1 DOMINETTE 4180P

SHF WONDER M326 W18 ET
NJW P606 72N DAYDREAM 73S
TFR HIGH COTTON 328 ET
BCC KAY 415

L1 DOMINO 99496
HH MS ADV 875H 1ET
CL1 DOMINO 1116L
CL 1 DOMINETTE 8124H 2ET

CED	BW	WW	YW	MILK	M&G	SC	REA	MARB.	BMI\$	CHB\$
+8.7	2.8	50	77	29	54	1.1	.58	-.19	446	91

Horned. These two Billy The Kid x 617 bulls are peas in a pod with BIG 205 WT. Larger outlined, long bodied and muscled up. Should raise excellent daughters and high quality steers. Top 11% CE, BMI, 20% BII. 70% pigment right eye, 80% left eye.



3412L



3407L

18 MONTH OLD BULLS

3409

BCC BILLY BOY 3409L ET

DOB: 8/21/23

Reg. # 44507261



NJW 73S W18 HOMETOWN 10Y ET
BCC BILLY THE KID 330A
 BCC SWEET CAROLINE 071X ET

SHF WONDER M326 W18 ET
 NJW P606 72N DAYDREAM 73S
 TFR HIGH COTTON 328 ET
 BCC KAY 415

BW 205
 71 713

HH ADVANCE 3113N 1ET
CL 1 DOMINETTE 617S
 CL 1 DOMINETTE 4180P

L1 DOMINO 99496
 HH MS ADV 875H 1ET
 CL1 DOMINO 1116L
 CL 1 DOMINETTE 8124H 2ET

CED	BW	WW	YW	MILK	M&G	SC	REA	MARB.	BMI\$	CHBS\$
+6.5	2.9	56	83	38	65	1.0	.59	-.01	497	118

Horned. These two Billy The Kid x 617 bulls are peas in a pod with BIG 205 WT. Larger outlined, long, long bodied and muscled up. Should raise excellent daughters and high quality steers. Their dam was an icon here. Top 3% MM, BMI, 6% BII, 11% M&G. 60% pigment left eye.



3409L

3410

BCC DOMINO 3410L

DOB: 8/22/23

Reg. # 44507262



CL 1 DOMINO 1152J
 CL 1 DOMINO 9108G 1ET
 CL 1 DOMINETTE 773E

HH ADVANCE 7156E ET
 CL 1 DOMINETTE 9184W
 HH ADVANCE 5044C ET
 CL1 DOMINETTE 5101C

BW 205
 69 584

BCC HARLET 775E
 CL1 DOMINO 5110C
 SR HARLET 960W

CL 1 DOMINO 3100A 1ET
 CL 1 DOMINETTE 055X
 CJH HARLAND 408
 SR MARY 4128

CED	BW	WW	YW	MILK	M&G	SC	REA	MARB.	BMI\$	CHBS\$
+7.2	3.1	58	88	34	62	0.9	.36	-.01	338	105

Horned. Check out the muscle shape and length in this dude. Dam is a high capacity, easy fleshing cow. Top 5% TEAT, 10% MM, UDDR, 20% M&G. 100% eye pigment.



3410L

3412

BCC DOMINO 3412L

DOB: 8/26/23

Reg. # 44539373



CL 1 DOMINO 1152J
 CL 1 DOMINO 9108G 1ET
 CL 1 DOMINETTE 773E

HH ADVANCE 7156E ET
 CL 1 DOMINETTE 9184W
 HH ADVANCE 5044C ET
 CL1 DOMINETTE 5101C

BW 205
 70 677

BCC VALENTINE 432B
 CL 1 DOMINO 297Z
 BCC HOLLY 1114Y

CL 1 DOMINO 860U
 CL 1 DOMINETTE 9134W 1ET
 BCC L1 HOGAN 710
 BCC KAY 415

CED	BW	WW	YW	MILK	M&G	SC	REA	MARB.	BMI\$	CHBS\$
-0.4	3.8	58	91	27	56	1.0	.24	-.01	304	99

HORNED. Ratioed 101 on BW and 107 on WW. Typical 1152 majestic and thick ended. 100% pigment right eye, 90% left eye. See photo on page 33.

3416

BCC DOMINO 3416L

DOB: 9/18/23

Reg. # 44507270



CL 1 DOMINO 1152J
 CL 1 DOMINO 9108G 1ET
 CL 1 DOMINETTE 773E

HH ADVANCE 7156E ET
 CL 1 DOMINETTE 9184W
 HH ADVANCE 5044C ET
 CL1 DOMINETTE 5101C

BW 205
 80 605

BCC MISS GAME CHANGER 692D ET
 H BK CCC SR GAME CHANGER ET
 HH MISS ADVANCE 7037T

KJ HVH 33N REDEEM 485T ET
 NJW 78P 63N LADYSPORT 51W ET
 HH ADVANCE 5061R ET
 HH MISS ADVANCE 5159R

CED	BW	WW	YW	MILK	M&G	SC	REA	MARB.	BMI\$	CHBS\$
+6.2	1.3	50	77	31	56	0.8	.35	.07	400	99

Scurred. Very quiet disposition and will leave you incredible udders and beautiful baldies. Ratioed 97 on BW. Top 1% UDDR & TEAT, 20% BW. 70% eye pigment right eye.

3415

BCC DOMINO 3415L

DOB: 9/17/23

Reg. # 44507267



CL 1 DOMINO 1152J
 CL 1 DOMINO 9108G 1ET
 CL 1 DOMINETTE 773E

HH ADVANCE 7156E ET
 CL 1 DOMINETTE 9184W
 HH ADVANCE 5044C ET
 CL1 DOMINETTE 5101C

BW 205
 83 688

BCC MISS MAYBERRY 523C ET
 LSW WCC ABOUT TIME X06
 BCC MISS MAYBERRY 064X

CRR ABOUT TIME 743
 WBCC WCC 69P MS RANGELAND U800
 TFR HIGH COTTON 328 ET
 BCC L1 MEDORA 744

CED	BW	WW	YW	MILK	M&G	SC	REA	MARB.	BMI\$	CHBS\$
+1.4	3.3	55	89	26	54	0.9	.50	-.07	343	103

Horned. Wide topped, good footed and thick ended. Dam is a powerhouse. Ratioed 103 on WW. 100% eye pigment.



3415L

TWO YEAR OLD BULLS

359

BCC ADVANCE 359L

DOB: 2/10/23

Reg. # 44495510



ECR 628 ADVANCE 8014

H FHF ADVANCE 628 ET
ECR 0132 DOMINETTE 3374

HH ADVANCE 4075B ET
FHF 408 RITA 21W
HH ADVANCE 0132X
ECR 7195 DOMINETTE 9143

BW	205
71	595

BCC MAYBARRY 0413H

SR SUSTAIN 808F
BCC MISS MAYBARRY 064X

CHURCHILL SENSATION 028X
SR SCOPIA 691D
TFR HIGH COTTON 328 ET
BCC L1 MEDORA 744

CED	BW	WW	YW	MILK	M&G	SC	REA	MARB.	BMI\$	CHB\$
+10.8	-0.6	48	62	19	43	-0.1	.47	.06	310	106

Horned heifer bull! Ratioed 89 on BW. Top 5% BW, 6% CE, 12% TEAT. 90% pigment right eye, 100% left eye.



359L

3172

BCC ADVANCE 3172L

DOB: 3/3/23

Reg. # 44498238



ECR 628 ADVANCE 8014

H FHF ADVANCE 628 ET
ECR 0132 DOMINETTE 3374

HH ADVANCE 4075B ET
FHF 408 RITA 21W
HH ADVANCE 0132X
ECR 7195 DOMINETTE 9143

BW	205
83	606

BCC SHIRLEY 0412H

SR SUSTAIN 808F
BCC SCARLET 767E ET

CHURCHILL SENSATION 028X
SR SCOPIA 691D
NJW 73S W18 HOMETOWN 10Y ET
BCC MISS MAYBARRY 064X

CED	BW	WW	YW	MILK	M&G	SC	REA	MARB.	BMI\$	CHB\$
+3.4	3.0	67	100	30	64	0.8	.61	.15	403	132

Scurred. Massive sound and correct. Should leave you with very productive cows! Top 10% WW, 16% M&G, 23% YW. Goggle eyed. 3172 is an MD carrier.



3172L

3192

BCC ADVANCE 3192L ET

DOB: 3/7/23

Reg. # 44498314



HH ADVANCE 8392F ET

HH ADVANCE 5345C
HH MISS ADVANCE 2022Z ET

HH ADVANCE 3297A ET
HH MISS ADVANCE 3235A
HH ADVANCE 9144W
HH MISS ADVANCE 7003T

BW	205
92	670

BCC SHEDAISY 018X

BCC HARLEY 884U ET
B&B L1 DOMINETE 275

CJH HARLAND 408
BCC SHE DAISY 141
CL 1 DOMINO 8153H
B&B L1 DOMINETTE 336

CED	BW	WW	YW	MILK	M&G	SC	REA	MARB.	BMI\$	CHB\$
+5.4	3.9	60	101	32	62	1.0	.71	.20	309	150

Horned. Little more frame and length. Sure to raise some outstanding feeders that will tip the scale and do good on the rail! Top 10% CW, CHB, 11% REA, 25% MM, M&G.



3192L

3215

BCC DIAMOND 3215L ET

DOB: 3/13/23

Reg. # 44498347



CL 1 DOMINO 1152J

CL 1 DOMINO 9108G 1ET
CL 1 DOMINETTE 773E

HH ADVANCE 7156E ET
CL 1 DOMINETTE 9184W
HH ADVANCE 5044C ET
CL 1 DOMINETTE 5101C

BW	205
89	716

BCC L1 DOMINETTE 454B

HH ADVANCE 1173Y ET
BCC BABY CHEEKS 2115Z

HH ADVANCE 7034T ET
HH MISS ADVANCE 5139R ET
HH ADVANCE 0184X ET
BCC SUGAR BABY 583

CED	BW	WW	YW	MILK	M&G	SC	REA	MARB.	BMI\$	CHB\$
+2.1	3.8	64	101	28	60	1.6	.50	-.04	329	117

Horned. What a beast, extremely easy doing and easy going. Maternally bred performance oriented. 716 205 wt., 1251 YW. Top 10% SC, UDDR, 12% TEAT, 17% WW. Goggle eyed.



3215L

TWO YEAR OLD BULLS



3233L

3233

BCC ARTHUR 3233L

DOB: 4/1/23

Reg. # 44482055



BCC ARTHUR 157J ET

HH ADVANCE 8392F ET

BCC LACEY 048X

CL1 DOMINO 5110C

BCC L1 MEDORA 0148H

BCC L1 L1 DOMINETTE 502C

HH ADVANCE 5345C

HH MISS ADVANCE 2022Z ET

GO EXCEL L18

BCC L1 MEDORA 757

CL 1 DOMINO 3100A 1ET

CL 1 DOMINETTE 055X

CL 1 DOMINO 314A

BCC L1 DOMINETTE 308A

BW 205
77 678

CED	BW	WW	YW	MILK	M&G	SC	REA	MARB.	BMI\$	CHBS
+6.7	1.8	59	93	38	68	0.7	.30	.12	369	118

Horned. One of the favorites at the ranch. Maternally bred with performance, power and balance. Outcross pedigree. Ratioed 100 for BW, 107 for WW. Top 3% MM, 6% M&G. 100% eye pigment. We would like to keep a partial possession for a couple of breeding season if it works for the buyer.

3238

BCC RIO 3238L

DOB: 4/2/23

Reg. # 44482065



HCC RIO GRANDE 9101 G ET

HILLS-GALORE 44Z RESOLUTE 128D

CHURCHILL LADY 002X ET

BCC MISS ADVANCE 554C

HH ADVANCE 0184X ET

BCC SCARLET 368A

RST X51 REVOLUTION 4102

HILLS-GALORE 52R CALLI 44Z

GOLDEN OAK OUTCROSS 18U

CHURCHILL LADY 600S ET

HH ADVANCE 8203U ET

HH MISS ADVANCE 1028L

NJW 73S W18 HOMETOWN 10Y ET

BCC VENUS 9116W

BW 205
89 647

CED	BW	WW	YW	MILK	M&G	SC	REA	MARB.	BMI\$	CHBS
+4.1	2.8	63	108	32	64	1.0	.80	.09	409	155

Horned. Burly with about as much muscle as you could want. He's stout and high capacity, big scrotal! Dam has always had a top end calf. Dams avg. WW ratio 108.4 on 9 calves and YW ratio 108.7 on 6 calves. Top 5% CW, REA, CHB, 10% YW, 15% M&G, 20% WW, MM. Goggle eyed.



3238L

18L

KCC UPGRADED 18L

DOB: 3/30/23

Reg. # 44476593



BCC UPGRADED 9103G

HAROLDSON'S UPGRADE T100 33D

BCC MISS ADVANCE 554C

KCC MS VICTORIA 14G

WORR RIBEYE 79C4 ET

KCC MS UNBELIEVABLE 8B

SHF TAHOE R117 T100

MOHICAN MISSEY 93W

HH ADVANCE 0184X ET

BCC SCARLET 368A

NJW 98S R117 RIBEYE 88X ET

ROSE MARIE 2Y79 ET

MH RAMBO 757 1ET

MC E BRIT VICTORIA 17N 1095 ET

BW 205
84 686

CED	BW	WW	YW	MILK	M&G	SC	REA	MARB.	BMI\$	CHBS
-2.6	4.2	61	95	24	55	1.2	.64	.14	292	126

Horned. Powerful and deep bodied. Dam's avg. WW ratio 109.3 on 3 calves and a picture perfect udder to go with it! Top 20% REA, top 25% CW. 95% eye pigment.



18L

BRED HEIFERS

BCC DOMINATOR 1124J (DLF,HYF,IEF,MSUDF)

DOB: 2/27/21

Reg. # 44248475



BCC DOMINATOR 829F

BCC DOMINATOR 619D

BCC DAFNEE 644D

BCC L1 DOMINO 7160E

CL1 DOMINO 5110C

BCC L1 DOMINETTE 225Z

CL 1 DOMINO 215Z
BCC MISS BELL 206Z
BCC L1 DOMINO 489B
BCC L1 DOMINETTE 498B

CL 1 DOMINO 3100A 1ET
CL 1 DOMINETTE 055X
HH ADVANCE 0132X
BCC L1 DOMINETTE 632

CED	BW	WW	YW	MILK	M&G	REA	MARB.	CHB\$
+5.4	1.1	61	87	41	72	.70	.30	163

1124J and 212 are the service sires on the bred heifers. All the heifers could be bred to either bull so DNA will need to be completed for sire verification to register your calves. The due date is determined by ultrasound.

MH 0504 BRITISHER 212 (DLF,HYF,IEF,MSUDF)

DOB: 3/22/22

Reg. # 44375353



MH 6038 BRITISHER 0504 1ET

BB 102 BRITISHER 6038

MH MISS SENSATION 247

MH MISS 814 WENDY 0376

BCC DOMINATOR 814F

MH MISS 587 DOMNET 8109

FA 71S BRITISHER 102W
BB MS 626S NEON 8017
CHURCHILL SENSATION 028X
MH DAKOTA LADY 9122

BCC DOMINATOR 619D
BCC VALENTINE 605D
H5 177 DOMINO 587
MH MISS 3326 RAMBO 5133

CED	BW	WW	YW	MILK	M&G	REA	MARB.	CHB\$
+6.3	2.1	65	99	39	71	.29	.17	119

1124J and 212 are the service sires on the bred heifers. All the heifers could be bred to either bull so DNA will need to be completed for sire verification to register your calves. The due date is determined by ultrasound.

343 BCC MEDORA 343L

DOB: 2/7/23

Reg. # 44451391



CL 1 DOMINO 1115J 1ET

CL 1 DOMINO 9108G 1ET

CL 1 DOMINETTE 713E 1ET

HH ADVANCE 7156E ET
CL 1 DOMINETTE 9184W
CL 1 DOMINO 215Z
HH MISS ADVANCE 9119W

BW	205
65	549

BCC MISS ADVANCE 9142G

HH ADVANCE 7039E ET

BCC MISS ADVANCE 535C

CL 1 DOMINO 420B 1ET
HH MISS ADVANCE 2022Z ET
HH ADVANCE 0184X ET
BCC L1 DOMINETTE 312A

CED	BW	WW	YW	MILK	M&G	SC	REA	MARB.	BMI\$	CHB\$
+11.1	-0.6	56	85	27	55	1.4	.40	.26	375	147

Horned. She will make someone a tremendous cow with amazing udder quality. Lots of calving ease and maternal value. Ratioed 85 for BW. Mother ratios 96.3 for BW on 4 head. Top 5% CE, BW, UDDR, TEAT, 15% CHB, 17% MARB. Due March 17.



343L

361 BCC MEDORA 361L

DOB: 2/11/23

Reg. # 44495993



CL 1 DOMINO 1115J 1ET

CL 1 DOMINO 9108G 1ET

CL 1 DOMINETTE 713E 1ET

HH ADVANCE 7156E ET
CL 1 DOMINETTE 9184W
CL 1 DOMINO 215Z
HH MISS ADVANCE 9119W

BW	205
77	515

BCC MISS ADVANCE 543C

HH ADVANCE 0184X ET

BCC L1 DOMINETTE 306A

HH ADVANCE 8203U ET
HH MISS ADVANCE 1028L
HH ADVANCE 1173Y ET
BCC L1 MEDORA 641

CED	BW	WW	YW	MILK	M&G	SC	REA	MARB.	BMI\$	CHB\$
+6.1	2.5	54	74	19	46	0.9	.16	.22	355	119

Horned, very feminine and fancy. These 1115s look like they will make phenomenal cows! Dam was very productive. Dam ratios 99 for BW, 101 for WW on 7 head. Top 8% UDDR, 12% TEAT. Due March 18.



361L



BRED HEIFERS

3122

BCC L1 MEDORA 3122L ET

DOB: 2/20/23

Reg. # 44497789



3122L

CL 1 DOMINO 7131E 1ET

HH ADVANCE 5044C ET
CL 1 DOMINETTE 3175A

CL 1 DOMINO 215Z
HH MISS ADVANCE 1072Y ET
CL 1 DOMINO 1161Y
CL 1 DOMINETTE 1123Y 1ET

BW	205
79	544

BCC L1 TAMA 580C ET

CL 1 DOMINO 105Y
CL 1 DOMINETTE 617S

CL 1 DOMINO 929W
CL 1 DOMINETTE 9140W 1ET
HH ADVANCE 3113N 1ET
CL 1 DOMINETTE 4180P

CED	BW	WW	YW	MILK	M&G	SC	REA	MARB.	BMI\$	CHB\$
+2.7	4.3	66	106	38	71	1.2	.35	-.03	384	113

Straight L1. A full brother was one of the high selling bulls last year to Bill and Kitty Blankenship. Can't go wrong with 617 in the pedigree. Dam is a full sib to the 542 cow THAT RATIOED 109.1 on 8 head. COW POWER here. Should milk like crazy. Top 3% MM, M&G, 12% WW, YW. Due March 14.



3163L

3163

BCC DORTHY 3163L ET

DOB: 3/3/23

Reg. # P44498214



JW B716 DEVOUT 18051

KCF BENNETT DEVOUT B716 ET
JW 936 DOMINETTE 1674 ET

CHURCHILL SENSATION 028X
KCF MISS PROFICIENT U201
HYALITE ON TARGET 936
CMR GV 484 MISS 5413

BW	205
76	509

SHF TIME 001A D81

GERBER ANODYNE 001A
SHF TIME 42X A140

KCF BENNETT 9126J R294
GERBER 627S HOLLY 096Y
K&B SENTINEL 0042X
KJ 796P TIMEWISE 006W ET

CED	BW	WW	YW	MILK	M&G	SC	REA	MARB.	BMI\$	CHB\$
+3.5	2.3	71	109	34	70	1.5	.58	.34	475	165

Homozygous polled. Straight from the front of our top end. This one has donor potential. Her mother, D81, has produced numerous top sellers including SHF Harvest H033, BCC Sunrise 243 and BCC Debonair 3170. The opportunity to buy such an amazing heifer doesn't come around like this often. This heifer will move your herd forward. Amazing EPD profile! Will retain 2 successful flushes totaling 12 viable embryos. Top 5% WW, M&G, UDDR, TEAT, BMI, BII, CHB, 10% YW, MM, MARB, 11% CW, 21% REA. Goggle eyed. Due March 17.

3164

BCC MEDORA 3164L ET

DOB: 3/3/23

Reg. # 44498219



CL 1 DOMINO 1152J

CL 1 DOMINO 9108G 1ET

HH ADVANCE 7156E ET
CL 1 DOMINETTE 9184W
HH ADVANCE 5044C ET
CL 1 DOMINETTE 5101C

BW	205
80	579

CL 1 DOMINETTE 773E

BCC L1 DOMINETTE 454B

HH ADVANCE 1173Y ET

HH ADVANCE 7034T ET
HH MISS ADVANCE 5139R ET
HH ADVANCE 0184X ET
BCC SUGAR BABY 583

BCC BABY CHEEKS 2115Z

CED	BW	WW	YW	MILK	M&G	SC	REA	MARB.	BMI\$	CHBS\$
+2.9	3.9	63	98	30	62	1.4	.39	.14	366	118

Horned. Out of the super cow 454. Her mother has done an incredible job and maintained perfect feet and legs and udder quality. This flush gave us 6 daughters so we have 4 full sisters that will be calving this spring and are very excited to see them in production and can't wait to hear how they do for you. Full sister to 3203 & 3215. Top 5% TEAT, 10% UDDR, 15% SC, 20% WW. Due March 17.



3164L

3203

BCC MEDORA 3203L ET

DOB: 3/10/23

Reg. # 44498336



CL 1 DOMINO 1152J

CL 1 DOMINO 9108G 1ET

HH ADVANCE 7156E ET
CL 1 DOMINETTE 9184W
HH ADVANCE 5044C ET
CL 1 DOMINETTE 5101C

BW	205
80	537

CL 1 DOMINETTE 773E

BCC L1 DOMINETTE 454B

HH ADVANCE 1173Y ET

HH ADVANCE 7034T ET
HH MISS ADVANCE 5139R ET
HH ADVANCE 0184X ET
BCC SUGAR BABY 583

BCC BABY CHEEKS 2115Z

CED	BW	WW	YW	MILK	M&G	SC	REA	MARB.	BMI\$	CHBS\$
+1.9	4.9	60	95	24	54	1.5	.30	.05	281	120

Horned. Out of the super cow 454. Her mother has done an incredible job and maintained perfect feet and legs and udder quality. This flush gave us 6 daughters so we have 4 full sisters that will be calving this spring and are very excited to see them in production. We can't wait to hear how they do for you! Full sister to 3164 & 3215. Top 10% UDDR, 15% SC, TEAT. Due March 5.



3203L

3204

BCC TIKA 3204L ET

DOB: 3/10/23

Reg. # 44498337



KLD RW MARKSMAN D87 ET

UPS SENSATION 2296 ET

CHURCHILL SENSATION 028X
UPS JT MISS NEON 7811 1ET
RW KW HUMMER K23 3078
RW DEDE 23C 9145

BW	205
72	515

RW MINDY 3078 6096

BCC MISS MAYBERRY 523C ET

LSW WCC ABOUT TIME X06

CRR ABOUT TIME 743
WBCC WCC 69P MS RANGELAND U800
TFR HIGH COTTON 328 ET
BCC L1 MEDORA 744

BCC MISS MAYBERRY 064X

CED	BW	WW	YW	MILK	M&G	SC	REA	MARB.	BMI\$	CHBS\$
+0.6	3.4	49	84	29	53	0.7	.64	-.06	391	117

Horned. Full sister to our \$100,000 heifer calf that sold in Kolts 2023 Simple Choices sale. If you're looking to raise show heifers this gal could get it done! Square, ultra pretty fronted and good haired. Due March 17.



3204L

15L

KCC MS PHOEBE 15L

DOB: 3/15/23

Reg. # P44476592



HAROLDSON'S UPGRADE T100 33D

SHF TAHOE R117 T100

SHF RIB EYE M326 R117
SHF LADY 512 L73
MOHICAN RANGELAND 221R
MOHICAN MISSEY 401R ET

BW	205
80	536

MOHICAN MISSEY 93W

RSK MNH 4Z MISS CALLIE 73C

RSK 719T FREESTYLE 4Z

TH 122 711 VICTOR 719T
RSK 15T MISS SUGAR CANE 17X
MEADOW-ACRES CONNECTED 13K 86R
DWT MISS RASBERRY 17R

MIL-WRAY CALLIE 23Y

CED	BW	WW	YW	MILK	M&G	SC	REA	MARB.	BMI\$	CHBS\$
-2.6	4.0	55	86	18	45	1.0	.59	.04	348	117

Polled. Very feminine with nice teat development. Can't go wrong with an Upgrade daughter! Dam still has a beautiful udder at 9 years old! Top 23% REA. Due March 12.



15L

COMMERCIAL HEIFERS

13 Commercial Hereford Heifer Calves

17 Commercial Angus Heifer Calves

They are all home raised. They have had these vaccinations: Pyramid 5 with Presponse, Vision 7 with Somnus, Express 5-HS, FP 5-VL5 HB and Bangs Vaccinated. Wormed with Safe Guard, Poured with Protectus.

Top bidder on each group can take all or gate cut 5 head or more from the pen being bid on.

HEREFORD HEIFERS

Head _____ Price _____

Head _____ Price _____

Head _____ Price _____

ANGUS HEIFERS

Head _____ Price _____

Head _____ Price _____

Head _____ Price _____

Head _____ Price _____



BCC BROOD COWS



021

BCC Belle 021H.



027

BCC Dominette 027H.



949

BCC Medora 949G.



959

BCC Foxy 959G.



976

BCC Miss Demand 976G.



067

BCC Billie Jean 067H.





Perry and Nancy Emch. Perry has been working for Baumgarten Cattle Co. for 10 years. He is a long time neighbor as well.



Todd, Liz, Brynlee and Declan Kuelbs. Todd came to work for Baumgarten Cattle Co. in the summer of 2019. Todd has five bulls and one bred heifer in the sale.

Thank you to all our customers and communities—it is because of your trust in us that we have been able to achieve this recognition.

#1
Ag Lender
in ND

RECOGNIZED IN
2011, 2014, 2015, 2016,
2017, 2018, 2019 & 2020



CHOICE BANK

bankwithchoice.com 888.894.1357 #PeopleFirst

Information on #1 Ag Lender: FDIC.gov, Choice Bank is a division of Choice Financial Group. Member FDIC.

PAYBACK MONTHLY SPECIAL:
Payback Minerals
available with Zinpro® Performance Minerals and Bio-Mos®

\$40 OFF PER TON

Ranchers, make **PAYBACK MINERAL** part of your productive feeding program, for a healthy, profitable herd.



Payback Mineral



Heifers:

- ▶ Improved growth
- ▶ Improved ovulation
- ▶ Better conception rates

Cows:

- ▶ Tighter calving intervals
- ▶ Improved conception rates

Bulls:

- ▶ Earlier puberty
- ▶ Enhanced semen quality
- ▶ Improved foot health

Healthy calves:

- ▶ Improved colostrum quality
- ▶ Better vaccination response
- ▶ Lower incidence of scours

Heavier calves:

- ▶ Increased milk production
- ▶ Tighter calving intervals
- ▶ Greater weaning weights

Payback mineral forms the foundation of a productive feeding program resulting in the best return on investment for your operation.

Ask about a Payback professional consultation for custom nutritional formulations for your operation

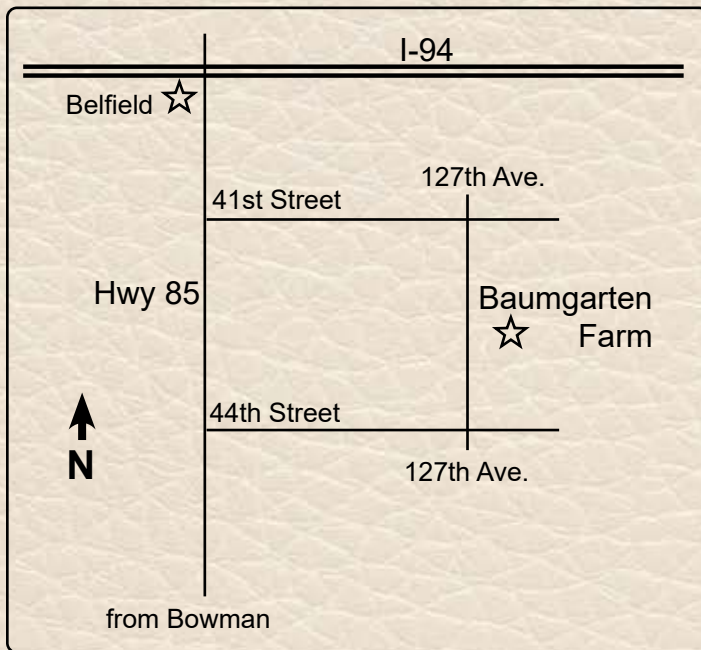
LEAD TIME 10 DAYS TO 2 WEEKS

NUTRITIONAL SOLUTIONS FROM **CHS**



BAUMGARTEN PRODUCTION SALE

Friday, February 7, 2025 • 1:00 p.m. MST
at the ranch south of Belfield, ND



From I-94 at Belfield, 5 miles south on Highway 85, turn left at 41st street and go 3 miles east, turn right at 127th Avenue and go 1 ½ miles south.

Coming from the south turn right on 44th street after mile marker 67. Go 3 miles east and then turn left at 127th Avenue and go 1 1/2 miles north.

Be careful about using GPS or Google maps. They will take you to the wrong location.

For Further Information Contact:

Rollie Baumgarten

4260 127th Avenue SW
Belfield, ND 58622
701-290-3469

Jake Baumgarten

701-290-3450

Catalog by Hereford America





Thanks for your continued support.





4260 127th Ave SW
Belfield, ND 58622

Address Service Requested

PRESORTED
FIRST CLASS
US POSTAGE PAID
UNITED PRINTING

